

We are IntechOpen, the world's leading publisher of Open Access books Built by scientists, for scientists

3,500

Open access books available

108,500

International authors and editors

1.7 M

Downloads

Our authors are among the

154

Countries delivered to

TOP 1%

most cited scientists

12.2%

Contributors from top 500 universities



WEB OF SCIENCE™

Selection of our books indexed in the Book Citation Index
in Web of Science™ Core Collection (BKCI)

Interested in publishing with us?
Contact book.department@intechopen.com

Numbers displayed above are based on latest data collected.
For more information visit www.intechopen.com



Watershed Monitoring for the Assessment of Irrigation Water Use and Irrigation Contamination

Iker García-Garizábal^{1,2}, Raphael Abrahao³ and Jesús Causapé²

¹University of Zaragoza,

²Spanish Geological Survey

³MIRARCO–Mining Innovation, Laurentian University

^{1,2}Spain

³Canada

1. Introduction

One of the main current questions on the sustainability of life in our planet is if in the next years there will be sufficient water to satisfy the necessities of agriculture and of the other users of this important resource (urban, industrial, touristic and ecological uses).

Irrigation activities allow for the increase of agrarian yields, also allowing for a greater stability in food supply, mainly in those regions where the development of crops is limited by rain. In this way, agriculture consumes 70% of all water extracted from natural courses, being considered the main responsible factor for global fresh water shortage (FAO, 2002).

Nevertheless, although the volumes employed by the agrarian sector are high, at a global level it is estimated that only 50% of the water extracted is finally utilized by plants; the remaining share ends up in drainage and irrigation return flows in rivers and aquifers (FAO, 2003).

These volumes returned to water systems could contribute to a reduction in the impact generated by the extraction of resources if the water quality was not very distant from that of the original water extracted, due to the transport of salts and agrochemicals from the soil profile.

Regarding the presence of agrochemicals, nitrate is a very important issue for water quality, and above all, is associated with notable changes implemented in agriculture in the last decades (OMS, 2004). The problem of nitrate with respect to other agrochemicals is its effect on human health by the simple fact of being present in high concentrations in potable water.

The consumption of water with high concentrations of nitrate causes the development of methemoglobinemia in the blood, making the blood stream incapable of transporting enough oxygen through the organism and leading to death of the individual (OMS, 2004).

On the other hand, the occurrence of high concentrations of nitrate in rivers and oceans is causing serious environmental effects on aquatic plants and animals, leading to the occurrence of anoxic zones and eutrophication of water resources (Diaz, 2001), as is evidenced on the coast of the United States (Scavia and Bricker, 2006) and China (Wang, 2006).

The impacts generated by irrigation can be aggravated by physical (geology and climate) and agronomic (management of irrigation and fertilization) factors. For example, the natural salinity of the area in which irrigation is implemented can contribute significantly to the

export of salts from the irrigated area, affecting water resources downstream (Christen et al., 2001; Tanji and Kielen, 2002). Strong rain events, on the other side, cause lateral and vertical mobility of the exported masses of contaminants (Thayalakumaran et al., 2007). Intense rain can also contribute to the erosion of soil and leaching of fertilizers and other agrochemicals (Carter, 2000).

Regarding agronomic factors, García-Garizábal et al. (2009) verified that an adequate management of irrigation water can reduce significantly the masses of salts and nitrates exported from an agrarian watershed. Gheysari et al. (2009) indicate that it is possible to control the levels of nitrate leaching from the root zone with an appropriate joint management of irrigation and fertilization. Also, it has been demonstrated that a decrease in nitrogenous fertilization can considerably decrease nitrate leaching levels without causing a drop in productivity (Moreno et al., 1996; Cui et al., 2010). It is therefore possible to achieve equilibrium between acceptable environmental impacts and high agrarian yields.

The main objective of this chapter is to compare and relate water use and contamination generated by salts and nitrates in two irrigated areas with different agronomic characteristics (flood vs. pressurized irrigation). This was carried out through the monitoring of the irrigated hydrological watersheds, analyzing the water use index and salt and nitrate contamination indices calculated for each watershed.

2. Description of study zones

2.1 Location

The study zones correspond to two irrigated watersheds, which are representative of the Bardenas Irrigation District (Spain; Figure 1). The first watershed presents flood irrigation while the second watershed presents pressurized irrigation systems. Both zones are supplied with good quality water ($EC = 0.3 \text{ dS/m}$; $NO_3 = 2 \text{ mg/l}$) from the Yesa reservoir, transported to the watersheds through the Bardenas channel (Figure 1).

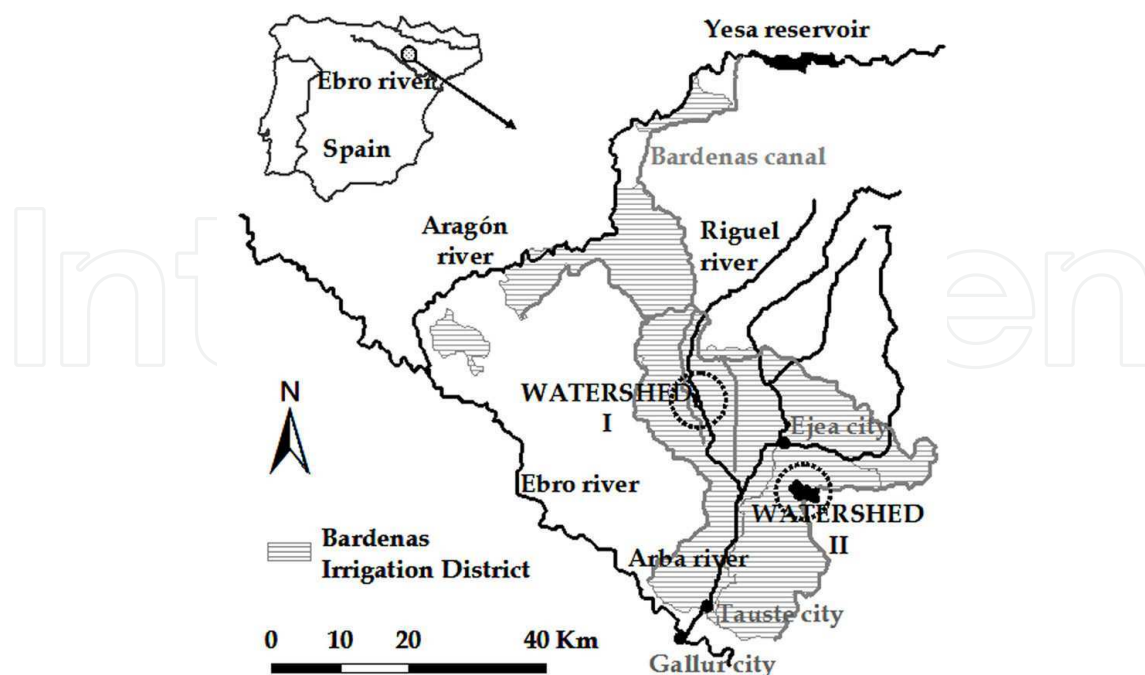


Fig. 1. Location of the Bardenas Irrigation District and the irrigated watersheds, object of this study.

The irrigation ditch network surrounding the flood-irrigated watershed constitutes the superficial water divide, delimiting a 95 ha hydrological watershed of which 96% corresponds to soils destined to irrigation. The remaining surface is occupied by access trails and superficial drainage network, which evacuates the irrigation surplus. The watershed is located at 367 masl

In the case of the pressurized-irrigated area, the watershed was delimited from the terrain digital model (CHE, 2010) and a point situated at the end of the gully, which is a natural drain and evacuates the agrarian drainage waters of the watershed. This watershed presents an extension of 405 ha of irrigated area and is located at an average altitude of 350 masl

2.2 Climate

The climate is Mediterranean warm (ITGE, 1985), presenting a historical reference evapotranspiration (ET_0) of 1068 mm/year and precipitation (P) of 460 mm/year (Figure 2; GA, 2009), with high annual variability. During the three years comprehending this study, there was an average climate year (2006) and two medium-dry years (2007 and 2008).

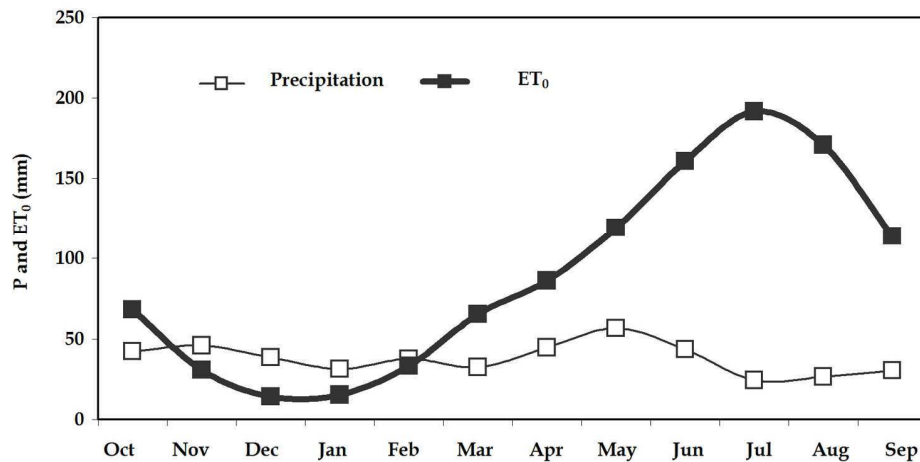


Fig. 2. Historical monthly dynamics of precipitation (P) and reference evapotranspiration (ET_0) in the zone of the two studied watersheds (GA, 2009a).

The dry months correspond to winter and summer seasons, while the wettest months are registered during spring and fall. Regarding ET_0 , minimum values are registered in winter and maximum values in summer, which widely exceed precipitation (Figure 2), making irrigation necessary to satisfy the water demands of the crops.

2.3 Geology

The watersheds are located on a glaciais of gravel with loamy matrix, constituting a free aquifer. A network of drainage ditches and drains affects the aquifer by forming a valley where tertiary substratum surfaces, constituting the local impermeable limit and acting also as a source of salts (Causapé et al., 2004a).

A sampling network transformed into piezometers determined a gravel thickness of up to 5.5 meters in the flood-irrigation watershed and of up to 10 meters in the pressurized-irrigation watershed. The thicknesses decreased progressively from the topographically higher zones until the lower part of the watershed, where it almost disappeared and the impermeable substratum surfaced.

Regarding the hydraulic characteristics of the aquifer, ITGE (1995) and SIAS (2009) estimate permeabilities of up to 90 m/day and transmissivities of up to 600 m²/day, with an effective porosity of approximately 10-15%.

2.4 Soils

The soils of the study zones were characterized through the elaboration of apparent electric conductivity (ECa) maps in homogeneous humidity conditions close to field capacity (after intense rain). To this end, ECa readings were obtained with a georeferenced mobile electromagnetic sensor (SEMG; Amezketa, 2007) model IS of Dualem, in horizontal configuration (ECah), integrating a depth of one meter, and in vertical configuration (ECav), which integrates a depth of 2 meters.

Data revealed low soil salinity ($CE_{ah_{Flood}} = 0.16$ dS/m; $CE_{av_{Flood}} = 0.25$ dS/m; $CE_{ah_{Press}} = 0.27$ dS/m; $CE_{av_{Press}} = 0.48$ dS/m), although slightly higher values were found in the soil of the pressurized-irrigation zone due to the natural salinity of the subsoil. The highest ECa recorded in the flood-irrigation watershed was 1.28 dS/m on tertiary lutites compared to almost 6 dS/m (Urdanoz et al., 2008) registered on the tertiary of the pressurized-irrigation zone.

Regarding the texture of the soils, Lecina et al. (2005) have already made a first characterization in the zone, classifying the soils in two groups. The first group corresponds to the soil developed on the glacia, with loamy texture, stone content between 11 and 13% and a moderate water holding capacity (WHC), classified as Calcixerollic Xerochrept with Petrocalcic Xerochrept inclusions (Soil Survey Staff, 1992). Conversely, the second group included the soil developed on the tertiary with loamy texture, much lower stone content, between 4 and 18%, and a higher water holding capacity, and classified as Typic Xerofluvent (Soil Survey Staff, 1992).

2.5 Agronomy: Irrigation and fertilization

Irrigation is the main component differentiating the two watersheds (Figure 3). Therefore, although both watersheds present on-demand irrigation, in which the farmers chose the time and amount of water to be applied (maximum annual water allowances established at the beginning of the season in function of the available reserves in the reservoir supplying the system), one of the watersheds was submitted to flood irrigation while the other watershed presented pressurized irrigation systems, with 86% of the surface occupied by sprinkler systems and the remaining 14% occupied by drip irrigation systems.

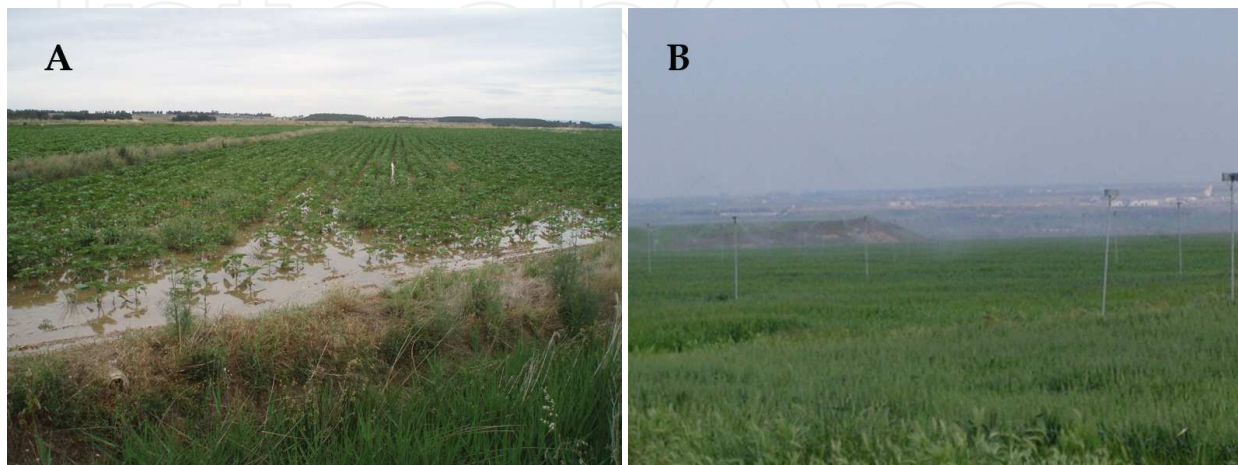


Fig. 3. Pictures of the flood irrigation system (A) and pressurized irrigation system (B).

Regarding the crops, distribution varied significantly in the watersheds as a consequence of the irrigation system in use. In the flood-irrigation watershed, winter cereal (46%) and alfalfa (31%) were the main crops, at the expense of minority crops such as maize and sunflower, with extensions no greater than 15% of the annual surface (Table 1). In the pressurized-irrigation watershed, maize was always the major crop (55%), followed by winter cereal (24%) and tomatoes (9%), with minor contributions of broccoli, sunflower or peas. Alfalfa was not found in the second watershed, even though it is a very common crop in this Irrigation District.

%	2006		2007		2008	
	Flood	Pressurized	Flood	Pressurized	Flood	Pressurized
Winter cereal	33	--	51	25	55	23
Alfalfa	39	--	31	--	24	--
Maize	8	61	3	63	--	40
Tomato	--	10	--	4	--	14
Others	20	29	15	8	21	23

Table 1. Distribution of the main crops in the flood-irrigation watershed and in the pressurized-irrigation watershed, for the three hydrological study years (2006-2008).

Irrigation volumes present variations among crops. In the flood-irrigation watershed, winter cereal presented 2-3 irrigation doses per year, each one of 128 mm. It must be noted that, very punctually, some farmers did not irrigate because rain was sufficient to satisfy the water demands. Alfalfa and maize, with higher water demands, presented 8-10 irrigation doses of 122 mm and 8 irrigation doses of 136 mm, respectively.

Crop	Flood			Pressurized		
	Irrigation	N Fert.	Yield	Irrigation	N Fert.	Yield
	mm	kg N/ha	kg/ha	mm	kg N/ha	kg/ha
Winter cereal	235	162	5000	157	164	4600
Alfalfa	1057	61	11700	--	--	--
Maize	1088	420	10600	740	380	12000
Tomato	--	--	--	552	182	80000

Table 2. Irrigation doses, nitrogenous fertilization and average yield for the crops in the flood- and pressurized-irrigation watersheds, for the three hydrological study years (2006-2008).

In the pressurized system, irrigation was characterized by a high number of applications, but with small volumes. Therefore, low doses were applied to winter cereal (10 doses of 15.7mm) while corn (40 doses of 18.5 mm) reached a total volume of 740 mm per year. Both were irrigated with sprinkler systems. Tomatoes were irrigated via drip irrigation, with very

frequent applications of small doses of water throughout the entire cycle, resulting in a total annual volume of 552 mm.

Regarding fertilization, the average annual doses were 156 kg N/ha in the flood-irrigation watershed and 273 kg N/ha in the pressurized-irrigation watershed, without significant variations in doses for the same crop. Therefore, the doses were sensibly high for corn, 420 kg N/ha in flood systems, compared to 380 kg N/ha in sprinkler systems. Winter cereal received an average fertilization of 163 kg N/ha, while tomatoes received 182 kg N/ha. For alfalfa, the average annual doses of nitrogen reached 61 kg N/ha although this fertilizer was not needed because alfalfa is a leguminous. In this sense, the good agrarian practice code (BOE 1996; BOA 1997), derived from the European directive 91/676 (EU 1991), establishes that nitrogenous fertilization of alfalfa is null with an exception for the year of implementation of the crop, with a limit of 30 kg N/ha. Nitrogenous fertilization was applied mainly in the form of complex NPK fertilizers (8-15-15 and 15-15-15), urea (46% N), nitrogenous solution N-32 (32% N) and, to a smaller extent, ammonia nitrate (33.5% N).

3. Methodology

Water use management was evaluated along with the contamination generated by both irrigated zones during three hydrological years (2006-2008). To this end, annual water balances were executed and the contaminant exports (masses of salts and nitrates) were quantified in each watershed. Subsequently, a series of indices was calculated to evaluate irrigation management and relate the contaminants to the salinity characteristics and nitrogenous fertilization (agronomic) of each irrigated zone. The Irrigation Land Environmental Evaluation Tool (in Spanish EMR; Causape, 2009) was used, which automates the calculations for the execution of the water balances and calculations of water use management indices (net hydric needs-HN; water use index-WUI; irrigation efficiency IE) and contamination indices (salt contamination index-SCI; nitrate contamination index-NCI).

3.1 Water balances

Annual water balances were executed from measurements or estimations of the main inputs, outputs and water storage in each irrigated watershed (Figure 4). The equation used in the balances was:

$$\text{Inputs} - \text{Outputs} - \text{Storage} = \text{Error balance}$$

$$(P + I + IWF) - (ET + Q + EWDL) - (S_s + S_a) = \text{Error} \quad (1)$$

were the inputs through precipitation (P), irrigation (I) and incoming water flows (IWF), minus the outputs through evapotranspiration (ET), drainage (Q) and losses due to evaporation and wind drift and evaporation losses from sprinkler irrigation (EWDL), minus water storage in the soil (S_s) and aquifers (S_a), constitute the balance error.

Climate data regarding precipitation and reference evapotranspiration (ET_o; Penman-Monteith) necessary for the execution of balances were obtained from agro-climatic stations that the Integral Counseling Service to Irrigation (in Spanish SIAR; GA, 2009a) installed in the proximity of the watersheds.

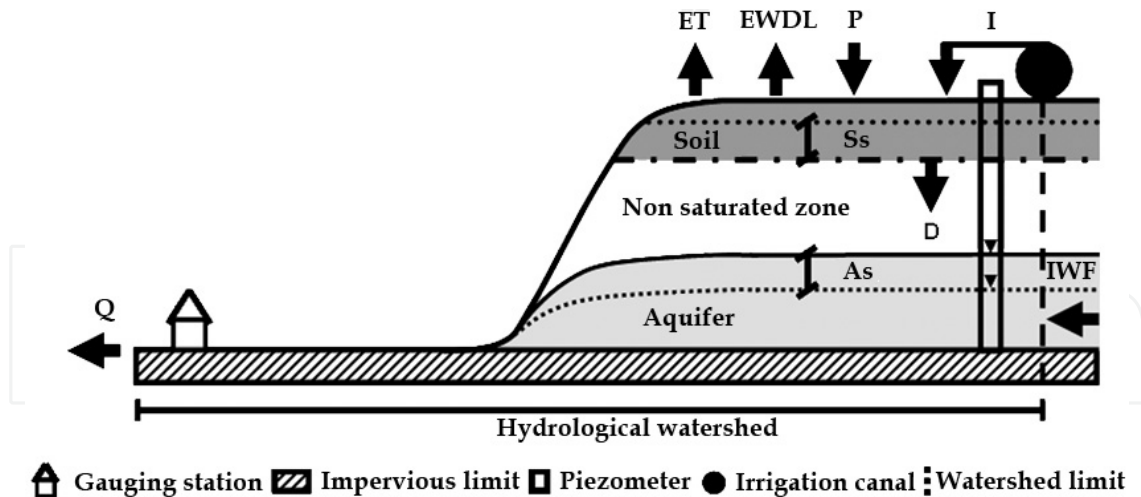


Fig. 4. Hydrogeological conceptual model in which the main hydric components are represented in the irrigated watersheds: irrigation (I), precipitation (P), losses due to evaporation and wind drift of sprinkler irrigation systems (EWDL), evapotranspiration (ET), soil drainage (D), incoming water flows (IWF), flow measured at the gauging station (Q), water stored in the soil (S_s) and in aquifers (S_a).

The daily irrigation volumes were facilitated by the Irrigation district. In the case of pressurized-irrigation, the losses via evaporation and wind drift in sprinkler systems were quantified through the equation proposed by Playán et al. (2005):

$$\text{EWDL (\%)} = 20.34 + 0.214 \cdot \text{ws} [\text{m/s}]^2 - 2.29 \cdot 10^{-3} \cdot \text{HR} [\%]^2 \quad (2)$$

where data on wind speed 2 m above the surface (WS, m/s) and relative humidity 1.5 m above ground level (HR, %) were needed.

The annual contribution of incoming water flows to the balance in the flood-irrigation watershed was quantified through the piezometer network. To this end, the saturated water thickness (SWT) measured once every 21 days in a piezometer installed northwest of the watershed was related to the water volume flowing through the drainage at the gauging station. The gauging station presented a rectangular flow meter and electronic limnigraph that registered water height every 15 minutes (h), transformed into flow according the equation ($Q_{\text{Flood}} (\text{m}^3/\text{s}) = 0.0002 h^2 - 0.0020 h - 0.0179$; $n = 9$; $R^2 = 0.99$; $p < 0.001$), yielding the calculation of $\text{IWF}_{\text{Flood}}$:

$$\text{IWF}_{\text{Flood}} (\text{m}^3/\text{day}) = 186.39 \cdot \exp^{1.82 \text{ SWT}}; n = 11; R^2 = 0.79; p < 0.001 \quad (3)$$

The incoming water flows in the pressurized-irrigation watershed from the unirrigable area included in the watershed were estimated from precipitation data and based on a runoff coefficient of 0.087. This coefficient was obtained from the relationship precipitation-flow. Based on the entire dataset available from the gauging station, it was verified that heavy rains yielded a higher runoff coefficient (0.313), which was then applied to daily rainfall events exceeding 25 mm.

In the pressurized-irrigation watershed, the equation utilized was provided by software Winflume (Wahl, 2000):

$$Q_{\text{Press}} (\text{m}^3/\text{s}) = 1.73 \cdot (h + 0.00347)^{1.624} \text{ for } h \leq 0.5 \text{ m} \quad (4)$$

$$Q_{\text{Press}} (\text{m}^3/\text{s}) = 10.28 \cdot (h + 0.01125)^{1.725} \text{ for } h > 0.5 \text{ m} \quad (5)$$

Regarding crop evapotranspiration (ET_C), it was calculated on a daily basis from the crop coefficients (K_C) determined for the study zone by Martínez-Cob (2004) and by ET_o according to the equation $ET_C = ET_o \cdot K_C$ (Allen et al., 1998). In this sense, ET_C was corrected daily by the real evapotranspiration (ET_R) from calculations developed by the EMR software. Therefore, daily data of irrigation, precipitation, evapotranspiration, along with hypothetical initial useful water available for the plants (AW_{initial}), constituted the inputs for the execution of the water balance in the soil of each plot, resulting in the daily estimations of real evapotranspiration, useful water stored in the soil (AU) and soil drainage.

Therefore, starting from an initial volume of available water for plants in the soil (AW), EMR adds the daily inputs by irrigation (I - EWDL) and precipitation (P), and ET_C is subtracted only if there is sufficient AW in the soil. EMR considers that $ET_a = ET_C$ if $AW_{\text{initial}} + P + I - EWDL > ET_C$, but otherwise $ET_a = AW_{\text{initial}} + P + I - EWDL$ - hence, the soil has a wilting point level of humidity at the end of each day ($AW = 0$). On the other hand, if $AW_{\text{initial}} + P + I - EWDL - ET_a > WHC$, the program interprets that the field soil capacity has been surpassed, obtaining drainage (DSWB) equal to $DSWB = AW_{\text{initial}} + P + I - EWDL - ET_a - WHC$, leaving the soil at the termination of each day at field capacity (maximum $AW = WHC$).

In order to obtain an approximate value of the water content in the soil in the beginning of the study, the execution of balances started one year before. With the information generated by the soil water balance, EMR estimates the direct components of the water balance in the watershed: real evapotranspiration, water storage and soil drainage. The drainage volume proceeding from irrigation (DI) was estimated by considering for the days and plots with drainage that if $AW + P - ET_a \geq WHC$ then $DI = I - EWDL$ and otherwise $DI = [I - EWDL] - [WHC - (AW + P - ET_a)]$. The interpretation of this calculation is that, on any given day, rainfall will always occur before irrigation and thereby irrigation drainage takes priority over rainfall drainage. It is assumed in this study that a farmer takes rainfall into account when deciding whether to irrigate, although evidently weather forecasting is by no means infallible.

Regarding water storage, from the balance equation it was obtained that soil storage resulted from the difference between water volume at the beginning and end of each hydrological year for each balance estimated by EMR. For water storage in the aquifer, this was calculated from the water height variation in the aquifer, measured by the piezometer network at the beginning and end of each hydrological year, applying an effective porosity between 15-20% according to the lithology of the materials extracted during sampling and to values registered during other local studies (Custodio & Llamas, 1983; ITGE, 1995).

Finally, the adequate closure of the water balances was quantified through the calculation of percentage errors:

$$\text{Error (\%)} = [(\text{Inputs} - \text{Outputs} - \text{Storage}) / (\text{Inputs} + \text{Outputs} + \text{Storage})] \cdot 200 \quad (6)$$

3.2 Evaluation of water use and irrigation quality

In order to calculate the irrigation quality during the three study years (2006-2008), the net hydric needs (HN) of the crops were calculated along with water use and irrigation efficiency indices, calculated by EMR once acceptable and satisfactory errors were achieved, which highlight the goodness of the water balances.

The hydric needs estimates the volume of irrigation water necessary to avoid crops from suffering water stress and for the soil to contain the same initial moisture conditions. The potential evapotranspiration and final useful water in the soil are added, to which effective precipitation and initial useful water in the soil are subtracted.

$$HN \text{ (mm)} = (ET_C + AW_{\text{final}}) - (AW_{\text{initial}} + P_{\text{ef}}) \quad (7)$$

The water use index quantifies the percentage of water resources (irrigation and precipitation) that have been used for evapotranspiration:

$$WUI \text{ (\%)} = [1 - (D + EWDL) / (I + P)] \cdot 100 \quad (8)$$

Finally, irrigation efficiency evaluates the percentage of irrigation volume that has not left the system, being used to satisfy the hydric needs of the crops or stored in the water storage in the soil.

$$IE \text{ (\%)} = [1 - (DI + EWDL) / (I)] \cdot 100 \quad (9)$$

3.3 Irrigation contamination: Masses of salts and nitrates exported

In order to quantify the masses of contaminants exported through the drainage associated with the watershed, salt and nitrate concentrations were assigned to the superficial drainage, to the subterranean flow, and to water storage in the aquifer.

$$D = Q - IWF + Sa \quad (10)$$

To this end, drainage stations were equipped with automatic water sampling equipment, programmed to collect daily samples. Subsequently the water samples were taken to the laboratory where the electrical conductivity at 25 °C was determined with an Orion 5-star conductivimeter equipped with a DuraProbe probe, and nitrate concentration was determined via colorimetry (AutoAnalyzer 3).

In order to determine the salt concentration in each water sample, electrical conductivity was transformed into total dissolved solids with the equation:

$$TDS \text{ (mg/l)} = DR \text{ (mg/l)} + \frac{1}{2} HCO_3^- \text{ (mg/l)}; \text{ (Custodio y Llamas, 1983)} \quad (11)$$

being DR the dry residue, and HCO_3^- the concentration of bicarbonate measured in 31 and 17 samples of the flood- and pressurized-irrigation watersheds, respectively. The values calculated were related to the measured EC for each water sample analyzed and were used to calculate the total dissolved solids in the drainage waters of both irrigated areas:

$$TDS_{\text{Flood}} \text{ (mg/l)} = 704 \cdot EC \text{ (dS/m)} + 90; n = 31; R^2 = 0.97; p < 0.001 \quad (12)$$

$$TDS_{\text{Press}} \text{ (mg/l)} = 712 \cdot EC \text{ (dS/m)} - 105; n = 17; R^2 = 0.99; p < 0.001 \quad (13)$$

For the incoming water flows, the electrical conductivity and nitrate concentration were determined from monthly values of water samples collected at subterranean or superficial entry points. Finally, the masses of salts and nitrates stored in the aquifer were obtained from the analyses of manually-obtained samples taken October 1 of the corresponding year for each piezometer.

3.4 Salt and nitrate contamination indices

Habitually, water contamination is evaluated by the contaminant concentration, although it is the load of exported salts in irrigation return flows that modifies the salinity of the hydric systems receiving such return flows, in function of the mixture proportions. Nevertheless, when considering only the masses of salts exported, “natural” salinity can mask the salinity induced by the management of each irrigation zone. The salt contamination index was calculated (SCI; Causapé, 2009) to determine the environmental impact of irrigation, and compare it to other zones with different natural conditions. This index corrects the exported mass by the electrical conductivity of drainage water under nonirrigated conditions (EC_{NR}), which is an indicator that represents the “natural” salinity of each irrigated zone.

$$SCI = D_{Salts} / EC_{NR} \quad (14)$$

In the case of nitrate, the exported mass is conditioned by the crops, hindering the comparison of the agroenvironmental impact induced by different irrigated zones or different years of the same irrigated area. The nitrate contamination index (NCI; Causapé, 2009) allows for such comparisons, differentiating the crop pattern with respect to other variables such as climate or agronomic management (irrigation and fertilization). This index analyzes the impact of agrarian activities and fertilization practices through a relationship between the nitrate exported through the drainage of the watershed and the theoretical nitrogenous fertilization needs ($FN = \text{Average yield (GA, 2009b)} \cdot \text{Nitrogen extractions (Orús and Sin, 2009)}$) of the area to evaluate.

$$NCI = D_N / FN \quad (15)$$

4. Results and discussion

4.1 Water balances

Water balances resulted satisfactory due to annual errors between -4.4% and 0.3% (Table 3), which remark the goodness of the balances and an adequate measurement and/or estimation of the components. In this way, it was possible to carry out the calculation of the management indices from the different components that constitute the balance equation.

Irrigation constituted the main contribution of water to the watersheds (45% of inputs), except in 2006 and 2007 for the pressurized-irrigation zone, where the installation of the irrigation systems was still being carried out and a part of the irrigable plots was under fallow conditions and did not present water supply. In 2008, after total implementation of irrigation systems, the water doses applied by the farmers increased until the same magnitude order was achieved for both watersheds (Table 3).

Regarding precipitation, it is considered to be the second most important water input in the balances (41%), oscillating between 426-450 mm in the rainiest year (2006) and 305-361 mm in the driest year (2008). Finally, subterranean water flows constituted up to 24% of the water inputs involved in the balances.

Regarding the outputs, evapotranspiration was the main component, resulting in 63-78% of outputs. The water volume measured in the drainage stations varied significantly, constituting 37% of outputs in the watershed with flood irrigation, and 16% in the watershed irrigated by pressurized systems. Nevertheless, subterranean flows presented a greater contribution in the flood-irrigation watershed (Table 3). When discounting the

contributions of subterranean water to the volume of water flowing through the gauging station, the drainage of the watershed was always greater in the flood-irrigation system. The water outputs counted as evaporation and drift losses increased to 6%.

	Inputs			Outputs			Storage		Unb.	Error
	P	I	IWF	ET	Q	EWDL	Sa	Ss		
	mm	mm	mm	mm	mm	mm	mm	mm	mm	%
Flood										
2006	450	567	285	830	417	0	42	65	-52	-4.4
2007	372	512	307	753	469	0	4	-39	4	0.3
2008	305	559	271	686	451	0	-16	13	1	0.1
Total	1127	1638	862	2269	1337	0	30	39	-48	-1.5
Pressurized										
2006	426	144	56	425	123	20	9	48	1	0.2
2007	411	397	31	643	106	57	68	-36	1	0.1
2008	361	519	27	656	118	59	69	7	-2	-0.2
Total	1198	1060	114	1724	347	136	146	19	0	0.0

Table 3. Water balance in the flood- and pressurized-irrigation watersheds. Inputs [precipitation (P), irrigation (I), incoming water flows (IWF)], outputs [evapotranspiration (ET), gauging station (Q) and evaporation and wind drift losses in sprinkler irrigation systems (EWDL)] and storage [in soil (Ss) and aquifers (Sa)] of water during the study period 2006-2008). Balance error (inputs-outputs-storage and unbalance).

Water storage was only 5-10% of the water volume involved in the balances, although its consideration resulted important in this type of studies as in the case of soil, WHC (maximum water volume that can be stored/evacuated from soil) itself can be in the order of precipitations during the driest years. The flood-irrigation watershed presented small annual variations in aquifer storage, while the pressurized-irrigation watershed presented water storage in the aquifer for all years, possibly associated with the fact that the pressurized watershed had newly-implement systems and did not reach equilibrium conditions at phreatic levels. In this sense, it is predicted that in the next years the variations in storage will decrease until equilibrium conditions are achieved in the system, and in the future both zones will probably present similar storage variations.

4.2 Evaluation of water use and irrigation quality

Evapotranspiration evolved differently in the two watersheds during the study period. In the flood-irrigation watershed, evapotranspiration suffered a decrease of 17% due to a change in crop pattern, with an expansion of winter cereal at the expense of maize and alfalfa. In the pressurized-irrigation watershed, evapotranspiration increased by 54%, due to the progressive increase of cultivated surface once the installation of irrigations systems was completed. Crop variations in the watersheds are reflected also on the hydric needs of the system, although unit volumes were similar, the greater cultivated surface in the pressurized-irrigation watershed conditioned higher water demands (Table 4).

Flood/Pressurized	HN	I	IE				WUI
			Winter cereal	Maize	Alfalfa	Tomatoe	
Year	hm ³ /year	hm ³ /year	%	%	%	%	%
2006	0.54 / 0.54	0.55 / 0.58	82 / --	74 / 75	78 / --	-- / 90	87 / 85
2007	0.40 / 1.33	0.48 / 1.61	88 / 62	56 / 74	77 / --	-- / 90	82 / 84
2008	0.55 / 1.90	0.53 / 2.10	82 / 86	-- / 71	72 / --	-- / 86	79 / 83
Average	0.50 / 1.26	0.52 / 1.43	84 / 74	65 / 73	76 / --	-- / 89	83 / 84

Table 4. Hydric needs (HN) of the crops, irrigation volume (I), irrigation efficiency (IE) of the main crops, and water use index (WUI) in the two irrigated watersheds during hydrological years 2006-2008.

The water use index was moderate-high, reaching 83% in the flood-irrigation watershed and 84% in the pressurized-irrigation watershed (90% could have been reached if evaporation and wind drift losses in the sprinkler system were nil). Evaporation and wind drift losses accounted for 13% of total irrigation in the watershed (15% of sprinkler irrigation). This value is slightly inferior to that calculated by Dechmi et al. (2003) and Playán et al. (2005) in other sprinkler-irrigation zones in the proximities, where evaporation and wind drift losses accounted for 15-20% of the applied irrigation.

Tomatoes presented the best irrigation applications, achieving plot irrigation efficiencies of 89%, followed by winter cereal (79%) and alfalfa (76%). Maize, which presents a high economic value in this zone, presented the lowest efficiency values (69%), possibly due to the fact that the great volumes of water were applied by the farmers when faced by the possibility of low productivity due to hydric deficit.

In this sense, although the higher efficiency and better use of water is demonstrated in pressurized-irrigation systems under adequate agronomic management (Clemmens & Detrick, 1994; Zalidis et al., 1997; Tedeschi et al., 2001; Al-Jamal et al., 2001; Caballero et al., 2001; Cavero et al., 2003; Causapé et al., 2006;) in comparison to nonpressurized- or flood-irrigation systems (Clemmens & Detrick, 1994; Isidoro et al., 2004; Causapé et al., 2004b; Causapé et al., 2006), an adequate flood irrigation management has allowed for water resource use values similar to those of an adequately managed modern pressurized system (Table 4). García-Garizábal & Causapé (2010) verified that the implementation of simple improvements in flood irrigation management on the part of the irrigation management organisms (from rotation to on-demand flood irrigation with maximum water allowances, and creation of water consumption accounts) increased by 26% the water use at the Irrigation District (Table 5).

	Water flow	Irrigation efficiency
Year	hm ³	%
2000	133	67
2007	116	93

Table 5. Water volume circulating through the drainage network of Bardenas District n° V and irrigation efficiency in 2000 (traditional flood irrigation) and 2007 (improved flood irrigation). Taken from García-Garizábal & Causapé (2010).

Therefore, an adequate management of flood irrigation and the implementation of pressurized systems allowed for good water use indices to be obtained by the farmers (79-87%), although water management still has to be sequentially adjusted to achieve continuous and uniform high values at the plots, which could be up to 95% (Tanji & Kielen, 2002). Superior efficiency recordings are not recommended, as the good conservation state of the agrarian soils would be at risk due to the insufficient leaching of evapoconcentrated salts accumulated in the soil profile (Abrol et al., 1988).

Therefore, in accordance to the previous results, the water use indices in the flood-irrigation watershed have a scarce margin for improvement, and the farmers' labour should be focused on maintaining such indices. Nevertheless, Lecina et al. (2005) affirm that it could be possible to increase water use in this zone with the implementation of pressurized-irrigation systems. On the other hand, the farmers of the watershed that already presents pressurized irrigation systems must concentrate efforts on improving irrigation application, mainly reducing the losses through evaporation and wind drift in sprinkler systems by applying water during the night or in low-wind periods (Playán et al., 2005; Zapata et al., 2007; Zapata et al., 2009).

4.3 Irrigation contamination: Exported masses and contamination indices

The salt masses accounted at the gauging stations of both watersheds were similar, although the pressurized-irrigation watershed presented a greater annual variability due to the increase in drainage volumes (irrigation system under implementation) and to the higher salinity of its return flows. The salts exported by each watershed (own drainage of the system) were significantly different, with 1.7 t/year in the flood-irrigation watershed and 3.2 t/year in the pressurized-irrigation watershed, due to less salt masses incorporated in subterranean flows and higher storage of salts in the aquifer in the latter (Table 6).

In relation to other zones, the masses exported by both watersheds were lower than those measured in irrigation zones with low-moderate water use index (around 50%), presenting annual exports between 3.4 and 4.7 t/year (Causapé et al., 2004c; Duncan et al., 2008), and similar to values encountered in irrigation zones with moderate-high irrigation efficiencies, between 73% (5.2 t/ha year; Roman et al., 1999) and 82% (3.9 t/ha year; Caballero et al., 2001).

Flood / Pressurized	Q_{Salts}	IWF_{Salts}	S_{Salts}	D_{Salts}	CE_{NR}	SCI
Year	t/ha	t/ha	t/ha	t/ha	dS/m	$\text{t} \cdot \text{ha}^{-1} / \text{dS} \cdot \text{m}^{-1}$
2006	2.8 / 2.8	1.4 / 1.8	0.5 / 1.2	1.9 / 2.2	1.1 / 3.8	1.8 / 0.6
2007	3.1 / 2.3	1.6 / 0.8	0.0 / 2.0	1.5 / 3.5	1.1 / 3.8	1.4 / 0.9
2008	2.9 / 3.2	1.2 / 0.6	-0.1 / 1.3	1.6 / 3.9	1.1 / 3.8	1.5 / 1.0
Average	2.9 / 2.8	1.4 / 1.1	0.1 / 1.5	1.7 / 3.2	1.1 / 3.8	1.6 / 0.8

Table 6. Mass of salts exported through drainage (Q_{salts}), mass of salts introduced in the incoming subterranean water flows (IWF_{salts}), mass of salts stored in the aquifer (S_{salts}), mass of salts associated with the watershed (D_{salts}), electrical conductivity under nonirrigated conditions (EC_{NR}) and salt contamination index (SCI) in the two studied watersheds (Flood- and pressurized-irrigation).

Regarding the salt contamination index, although the flood-irrigation watershed presented lower natural salinity ($EC_{\text{NR-Flood}} = 1.1 \text{ dS/m}$ vs. $EC_{\text{NR-Press}} = 3.8 \text{ dS/m}$) the SCI values were higher than those calculated for the pressurized-irrigation watershed. The high natural

salinity of the pressurized-irrigation watershed motivated higher salt exports than those of the flood-irrigation zone, even presenting similar water use values. The higher amount of salts present in the subsoil of the pressurized-irrigation watershed caused the “evaluation” of the salinity impact to be lower due to the impossibility to export naturally low salt masses. In this sense, irrigation zones with high use values obtain salt contamination indices of only 0.4 t/ha year \cdot dS/m, while irrigation zones with lower efficiencies present higher values (1.9 t/ha year \cdot dS/m), reaching up to 11.4 t/ha year \cdot dS/m in agrarian systems with high natural salinity values.

In the case of nitrate, the mass exported by the flood-irrigation zone reached 61 kg N/ha year with a low annual variability, compared to 12 kg N/ha year of the pressurized-irrigation system, although the latter increased exports in more than 200% during the study period (2006-2008).

This increase in the mass of exported nitrates is associated with the increase in drainage volumes measured in the gauging station, due to the expansion of irrigation in the pressurized-irrigation watershed, and to the consequent higher volumes of irrigation water and nitrogenous fertilization entering the watershed.

The flood-irrigation watershed presented minimum annual variations in the nitrate stored in the aquifer, while the pressurized-irrigation watershed always recorded positive nitrate storage due to water storage suffered by the aquifer at the end of irrigation cycles (Table 7).

When compared to other irrigated zones, the masses of exported nitrates were always lower than those quantified in irrigation areas with efficiencies of approximately 50% (Causapé et al., 2004b; Isidoro et al., 2006b) and were similar to the masses measured in irrigation systems with efficiencies higher than 70% (Cavero et al., 2003; Bustos et al., 2006). Nevertheless, in the last two irrigation zones the fertilization needs were of the same order of those calculated in the pressurized-irrigation watershed and 2-3 times superior to those of the flood-irrigation watershed.

Flood / Pressurized	Q_N	IWF_N	Sa_N	D_N	FN	NCI
Years	kg N/ha	kg N/ha	kg N/ha	kg N/ha	kg N/ha	--
2006	59 / 6	10 / 0.4	4 / 4	53 / 10	75 / 78	0.70 / 0.12
2007	67 / 10	10 / 0.6	2 / 26	59 / 36	82 / 150	0.72 / 0.24
2008	56 / 19	6 / 0.4	-3 / 15	47 / 33	77 / 166	0.61 / 0.20
Average	61 / 12	9 / 0.5	1 / 15	53 / 26	78 / 131	0.68 / 0.20

Table 7. Nitrate masses exported through drainage (Q_N), nitrate mass introduced in the incoming subterranean flows (IWF_N), nitrate mass stored in the aquifer (Sa_N), mass of exported nitrates associated with the watershed (D_N) nitrogenous fertilization needs (FN), nitrate contamination index (NCI) in the two studied watersheds (Flood- and pressurized-irrigation).

The lower nitrogenous fertilization needs of the flood-irrigation watershed ($NF_{Flood} = 78$ kg N/ha *vs.* $NF_{Press} = 131$ kg N/ha) induced NCI values always higher than those of the pressurized-irrigation watershed. Therefore, although the flood-irrigation watershed presented lower nitrogen requirements, the masses of exported nitrates was higher due to greater drainage volumes, even when water use indices were similar for both watersheds.

This fact caused a lower impact, although the amount of nitrogen applied to the pressurized-irrigation watershed was higher. This behaviour is similar to the one obtained when nitrate contamination indices are compared to those of other irrigation areas.

Irrigation areas with high water use (73-90%) and nitrogenous fertilization needs (144-213 kg N/ha) obtain nitrate contamination indices of approximately 0.25, while other zones with application efficiencies around 50% present higher NCI values (1.2), presenting in this case nitrogenous fertilization needs of 164 kg N/ha.

5. Conclusions

The proposed methodology for the monitoring of hydrological watersheds and execution of water balances to evaluate irrigation management resulted satisfactory, mainly when calculating annual errors between -4.4% and 0.3%, which remarks the goodness of the balances and allows for the evaluation of irrigation and water resource management from the values provided.

Although there was a clear difference between the irrigation systems present in the evaluated watersheds (flood and sprinkler irrigation), the water use values obtained were similar, approximately 84%. This fact highlights the possibility of reaching adequate water management levels by adapting the irrigation systems, although it is necessary to know the soil, crop, and supply capacity characteristics in order to establish the management strategy and most adequate water management.

Regarding the exports of contaminants, the highest mass of salts was measured in the irrigation zone with the most saline subsoil ($D_{\text{Salts-Flood}} = 1.7 \text{ t/ha year}$ vs. $D_{\text{Salts-Press}} = 3.2 \text{ t/ha year}$), while the highest nitrate mass was measured at the watershed with the lowest nitrogenous fertilization input ($D_{\text{Nitrate-Flood}} = 53 \text{ kg N/ha year}$ vs. $D_{\text{Nitrate-Press}} = 26 \text{ kg N/ha year}$) due to the greater drainage volume ($\text{Station}_{\text{Flood}} = 446 \text{ mm}$ vs. $\text{Station}_{\text{Press}} = 116 \text{ mm}$). The contamination indices always resulted better for the pressurized-irrigation watershed ($\text{SCI} = 0.8 \text{ t} \cdot \text{ha}^{-1} / \text{dS} \cdot \text{m}^{-1}$; $\text{NCI} = 0.20$) than for the flood-irrigation watershed ($\text{SCI} = 1.6 \text{ t} \cdot \text{ha}^{-1} / \text{dS} \cdot \text{m}^{-1}$; $\text{NCI} = 0.68$), and therefore it is possible to reduce the degree of contamination if water use is improved, decreasing the irrigation return flow volumes.

6. Acknowledgments

The authors are thankful to the support of the Spanish Government through projects AGL2005-07161-C05-01 (MEC), CGL2009-13410-C02-01 (MICINN) and formation scholarship BES-2006-12662 (MEC) and to the support of European Union Program of High Level Scholarships for Latin America through Alþan Scholarship n^o. E07D400318BR. Thanks are extended to the Bardenas Canal Irrigation District n^o V Authority, Bardenas Canal Irrigation District n^o XI Authority, Agrifood Research and Technology Centre of Aragón (CITA-DGA) and to the farmers for their valuable collaboration.

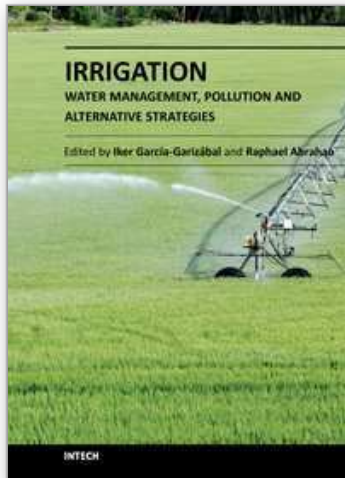
7. References

- Abrol, I.P.; Yadav., J.S.P. & Massud, M.I. (1988). *Salt affected soils and their management*. Food and Agriculture Organization of the United Nations, ISBN 92-5-102686-6, Roma, Italy.
- Al-Jamal, M.S.; Ball, S. & Sammis, T.W. (2001). Comparison of sprinkler, trickle and furrow irrigation efficiencies for onion production. *Agricultural Water Management*, Vol.46, No.3, (January 2001), 253-266, ISSN 0378-3774.
- Allen, R.; Pereira, L.; Raes, D. & Smith, M. (1998). *Crop evapotranspiration. Guidelines for computing crop water requirements*. Food and Agriculture Organization of the United Nations, ISBN 92-5-104219-5, Roma, Italy.

- Amezketta, E. (2007). Soil salinity assessment using directed soil sampling from a geophysical survey with electromagnetic technology: a case study. *Spanish Journal of Agricultural Research*, Vol.5, No.1, (March 2007), 91-101, ISSN 1695-971X.
- BOA (1997). Decreto 77/1997, de 27 de mayo, del Gobierno de Aragón, por el que se aprueba el Código de Buenas Prácticas Agrarias de la Comunidad Autónoma de Aragón y se designan determinadas áreas Zonas Vulnerables a la contaminación de las aguas por los nitratos procedentes de fuentes agrarias. *Boletín Oficial de Aragón del 11 de junio de 1997*, Government of Aragón, Spain.
- BOE (1996). Real Decreto 261/1996, de 16 de febrero, sobre protección de las aguas contra la contaminación producida por los nitratos procedentes de fuentes agrarias. *Boletín Oficial del Estado del 11 de marzo de 1996*, Government of Spain, Spain.
- Caballero, R.; Bustos, A. & Roman, R. (2001). Soil salinity under traditional and improved irrigation schedules in central Spain. *Soil Science Society of America Journal*, Vol.65, No.4, (July-August 2001), 1210-1218, ISSN 0361-5995.
- Carter, A.D. (2000). Herbicide movement in soils: principles, pathways and processes. *Weed Research*, Vol.40 (February 2000), 113-122, ISSN 1365-3180.
- Causapé, J. (2009). A computer-based program for the assessment of water-induced contamination in irrigated lands. *Environmental Monitoring and Assessment*, Vol.158, No.1-4, (November 2009), 307-314, ISSN 0167-6369.
- Causapé, J.; Auqué, L.; Gimeno, M.J.; Mandado, J.; Quílez, D. & Aragüés, R. (2004a). Irrigation effects on the salinity of the Arba and Riguel rivers (Spain): Present diagnosis and expected evolution using geochemical models. *Environmental Geology*, Vol.45, No.5, (March 2004), 703-715, ISSN 0943-0105.
- Causapé, J.; Quílez, D. & Aragüés, R. (2004b). Assessment of irrigation and environmental quality at the hydrological basin level - I. Irrigation quality. *Agricultural Water Management*, Vol.70, No.3, (December 2004), 195-209, ISSN 0378-3774.
- Causapé, J.; Quílez, D. & Aragüés, R. (2004c). Assessment of irrigation and environmental quality at the hydrological basin level - II. Salt and nitrate loads in irrigation return flows. *Agricultural Water Management*, Vol.70, No.3, (December 2004), 211-228, ISSN 0378-3774.
- Causapé, J.; Quílez, D. & Aragüés, R. (2006). Irrigation efficiency and quality of irrigation return flows in the Ebro River Basin: An overview. *Environmental Monitoring and Assessment*, Vol.117, No.1-3, (June 2006), 451-461, ISSN 0167-6369.
- Cavero, J.; Beltrán, A. & Aragüés, R. (2003). Nitrate exported in drainage waters of two sprinklerirrigated watersheds. *Journal of Environmental Quality*, Vol.32, No.3, (May 2003), 916-926, ISSN 0047-2425.
- CHE (October 2010). Geoportal SITEbro, Available from <http://iber.chebro.es/geoportal/index.htm>
- Christen, E.W.; Ayars, J.E. & Hornbuckle, J.W. (2001). Subsurface drainage design and management in irrigated areas of Australia. *Irrigation Science*, Vol.21 (December 2001), 35-43, ISSN 0342-7188.
- Clemmens, A.J. & Dedrick, A. R. (1994). Irrigation techniques and evaluations. In: *Advanced Series in Agricultural Sciences*. Tanji, K.K. & Yaron, B. (Eds.), 64-103, Springer-Verlag, ISBN 3-540-57309-7, Berlin.
- Cui, Z., Zhang, F., Chen, X., Dou, Z., Li, J. (2010). In-season nitrogen management strategy for winter wheat: Maximizing yields, minimizing environmental impact in an over-fertilization context. *Field Crops Research*, Vol.116 (March 2010), 140-146, ISSN 0378-4290.

- Custodio, E. & Llamas, M. (1983). *Hidrología Subterránea*. Ediciones Omega, ISBN 84-282-0446-2, Barcelona.
- Dechmi, F.; Playán, E.; Caveró, J.; Faci, J.M. & Martínez-Cob, A. (2003). Wind effects on solid set sprinkler irrigation depth and yield of maize (*Zea mays*). *Irrigation Science*, Vol.22, No.2, (September 2003), 67-77, ISSN 0342-7188.
- Diaz, R.J. (2001). Overview of hypoxia around the world. *Journal of Environmental Quality*, Vol.30 (March 2001), 275-281, ISSN 0047-2425.
- Duncan, R. A.; Bethune, M. G.; Thayalakumaran, T.; Christen, E. W. & McMahon, T. A. (2008). Management of salt mobilisation in the irrigated landscape. A review of selected irrigation regions. *Journal of Hydrology*, Vol.351, No.1-2, (March 2008), 238-252, ISSN 0022-1694.
- EU (1991). *Council Directive 91/676/EEC of 12 December 1991 concerning the protection of waters against pollution caused by nitrates from agricultural sources*, European Council.
- FAO (2002). *World agriculture towards 2015/2030. An FAO perspective*. Food and Agriculture Organization of the United Nations. ISBN 92-5-304761-5, Roma, Italy.
- FAO (2003). *Unlocking the water potential of agriculture*. Food and Agriculture Organization of the United Nations, ISBN 92-5-104911-4, Roma, Italy.
- GA (November 2009a). Oficina del Regante, Datos meteorológicos, Available from <http://oficinaregante.aragon.es>
- GA (November 2009b). Anuario estadístico agrario, Available from <http://www.aragon.es/DepartamentosOrganismosPublicos/Departamentos/AgriculturaAlimentacion/AreasTematicas/EstadisticasAgrarias?channelSelected=1cfbc8548b73a210VgnVCM100000450a15acRCRD>
- García-Garizábal, I., Causapé, J., Abrahão, R. (2009). Evolution of the efficiency and agro-environmental impact of a traditional irrigation land in the middle Ebro Valley (2001-2007). *Spanish Journal of Agricultural Research*, Vol.7 (June 2009), 465-473, ISSN 1695-971X.
- García-Garizábal, I. & Causapé, J. (2010). Influence of irrigation water management on the quantity and quality of irrigation return flows. *Journal of Hydrology*, Vol.385, No.1-4, (May 2010), 36-43, ISSN 0022-1694.
- Gheysari, M., Mirlatifi, S.M., Homae, M., Asadi, M.E., Hoogenboom, G. (2009). Nitrate leaching in a silage maize field under different irrigation and nitrogen fertilizer rates. *Agricultural Water Management*, Vol.96 (June 2009), 946-954, ISSN 0378-3774.
- Isidoro, D.; Quílez, D. & Aragüés, R. (2004). Water balance and irrigation performance analysis: La Violada irrigation district (Spain) as a case study. *Agricultural Water Management*, Vol.64, No.2, (January 2004), 123-142, ISSN 0378-3774.
- ITGE (1985). *Investigación de los recursos hidráulicos totales de la cuenca del río Arba*. Instituto Tecnológico Geominero de España, Spain.
- ITGE (1995). *Informe complementario del mapa geológico de Luna. Hidrogeología de la hoja de Luna (27-11)*, Instituto Tecnológico Geominero de España, Spain.
- Lecina, S.; Playan, E.; Isidoro, D.; Dechmi, F.; Causapé, J. & Faci, J. M. (2005). Irrigation evaluation and simulation at the irrigation District V of Bardenas (Spain). *Agricultural Water Management*, Vol.73, No.3, (May 2005), 223-245, ISSN 0378-3774.
- Moreno, F., Cayuela, J.A., Fernández, J.E., Fernández-Boy, E., Murillo, J.M., Cabrera, F. (1996). Water balance and nitrate leaching in an irrigated maize crop in SW Spain. *Agricultural Water Management*, Vol.32 (November 1996), 71-83, ISSN 0378-3774.

- Martínez-Cob, A. (November 2010). Revisión de las necesidades hídricas netas de los cultivos de la cuenca del Ebro, Available from http://digital.csic.es/bitstream/10261/15896/1/NecHidrCHE04_T1_Mem.pdf
- Orús, F. & Sin, E. (2006). *El balance del nitrógeno en la agricultura. Fertilización nitrogenada. Guía de actualización*. Gobierno de Aragón, ISSN 1137-1730, Zaragoza, Aragón, Spain.
- Playán, E., Salvador, R., Faci, J.M., Zapata, N., Martínez-Cob, A., Sánchez, I. 2005. Day and night wind drift and evaporation losses in sprinkler solid-sets and moving laterals. *Agricultural Water Management*, Vol.76, No.3, (August 2005), 139-159, ISSN 0378-3774.
- Roman, R.; Caballero, R. & Bustos, A. (1999). Field water drainage under traditional and improved irrigation schedules for corn in central Spain. *Soil Science Society of America Journal*, Vol.63, No. 6, (November-December 1999), 1811-1817. ISSN 0361-5995.
- Scavia, D. & Bricker, S.B. (2006). Coastal eutrophication assessment in the United States. *Biogeochemistry*, Vol.79(May 2006), 187-208, ISSN 0168-2563.
- Tanji, K.K. & Kielen, N.C. (2002). *Agricultural drainage water management in arid and semi-arid areas*. FAO irrigation and drainage paper n° 61, ISBN 92-5-104839-8, Roma, Italy.
- Thayalakumaran, T., Bethune, M.G., McMahan, T.A. (2007). Achieving a salt balance - Should it be a management objective?. *Agricultural Water Management*, Vol.92 (August 2007), 1-12, ISSN 0378-3774.
- Urdanoz, V.; Amezqueta, E.; Clavería, I.; Ochoa, V. & Aragües, R. (2008). Mobile and georeferenced electromagnetic sensors and applications for salinity assessment. *Spanish Journal of Agricultural Research*, Vol.6, No.3, (September 2008), 469-478, ISSN 1695-971X.
- SIAS (November 2009). Sistema de Información del Agua Subterránea, Available from <http://www.igme.es/internet/ServiciosMapas/siasespana/sias-es.html>
- Soil Survey Staff (1992). *Keys to soil taxonomy*. Pocahontas Press, ISBN 0-936015-39-X, Blacksburg, Virginia, USA.
- Tedeschi, A.; Beltrán, A. & Aragües, R. (2001). Irrigation management and hydrosalinity balance in a semi-arid area of the middle Ebro river basin (Spain). *Agricultural Water Management*, Vol.49, No.1, (July 2001), 31-50, ISSN 0378-3774.
- Tanji, K.K. & Kielen, N.C. (2002). *Agricultural drainage water management in arid and semi-arid areas*. Food and Agriculture Organization of the United Nations, ISBN 92-5-104219-5, Roma, Italy
- Wahl, T. (2000). *Winflume user's manual*. United States Department of the Interior, USA.
- Wang, B. (2006). Cultural eutrophication in the Changjiang (Yangtze River) plume: History and perspective. *Estuarine Coastal and Shelf Science*, Vol.69 (September 2006), 471-477, ISSN 0272-7714.
- WHO (2004). *Guidelines for drinking-water quality. Vol.1: Recommendations*. World Health Organization, ISBN 92-4-154638-7, Geneva, Italy.
- Zalidis, G.; Dimitriads, X.; Antonopoulos, A. & Geraki, A. (1997). Estimation of a network irrigation efficiency to cope with reduced water supply. *Irrigation Drainage Systems*, Vol.11, No.4, (November 1997), 337-345, ISSN 0168-6291.
- Zapata, N., Playan, E., Martínez-Cob, A., Sánchez, I., Faci, J.M., Lecina, S. 2007. From on-farm solid-set sprinkler irrigation design to collective irrigation network design in windy areas. *Agricultural Water Management* 87 (2): 187-199.
- Zapata, N., Playán, E., Skhiri, A., Burguete, J. (2009). Simulation of a collective solidset sprinkler irrigation controller for optimum water productivity. *Journal of Irrigation and Drainage Engineering* 135 (1): 13-24.



Irrigation - Water Management, Pollution and Alternative Strategies

Edited by Dr Iker Garcia-Garizabal

ISBN 978-953-51-0421-6

Hard cover, 234 pages

Publisher InTech

Published online 28, March, 2012

Published in print edition March, 2012

Irrigated agriculture is the most significant user of fresh water in the world and, due to the large area occupied, is one of the major pollution sources for the water resources. This book comprises 12 chapters that cover different issues and problematics of irrigated agriculture: from water use in different irrigated systems to pollution generated by irrigated agriculture. Moreover, the book also includes chapters that deal with new possibilities of improving irrigation techniques through the reuse of drainage water and wastewater, helping to reduce freshwater extractions. A wide range of issues is herein presented, related to the evaluation of irrigated agriculture impacts and management practices to reduce these impacts on the environment.

How to reference

In order to correctly reference this scholarly work, feel free to copy and paste the following:

Iker García-Garizabal, Raphael Abrahao and Jesús Causapé (2012). Watershed Monitoring for the Assessment of Irrigation Water Use and Irrigation Contamination, *Irrigation - Water Management, Pollution and Alternative Strategies*, Dr Iker Garcia-Garizabal (Ed.), ISBN: 978-953-51-0421-6, InTech, Available from: <http://www.intechopen.com/books/irrigation-water-management-pollution-and-alternative-strategies/watershed-monitoring-for-the-assessment-of-irrigation-water-use-and-contamination>

INTECH
open science | open minds

InTech Europe

University Campus STeP Ri
Slavka Krautzeka 83/A
51000 Rijeka, Croatia
Phone: +385 (51) 770 447
Fax: +385 (51) 686 166
www.intechopen.com

InTech China

Unit 405, Office Block, Hotel Equatorial Shanghai
No.65, Yan An Road (West), Shanghai, 200040, China
中国上海市延安西路65号上海国际贵都大饭店办公楼405单元
Phone: +86-21-62489820
Fax: +86-21-62489821

© 2012 The Author(s). Licensee IntechOpen. This is an open access article distributed under the terms of the [Creative Commons Attribution 3.0 License](#), which permits unrestricted use, distribution, and reproduction in any medium, provided the original work is properly cited.

IntechOpen

IntechOpen