

# We are IntechOpen, the world's leading publisher of Open Access books Built by scientists, for scientists

5,000

Open access books available

125,000

International authors and editors

140M

Downloads

Our authors are among the

154

Countries delivered to

TOP 1%

most cited scientists

12.2%

Contributors from top 500 universities



WEB OF SCIENCE™

Selection of our books indexed in the Book Citation Index  
in Web of Science™ Core Collection (BKCI)

Interested in publishing with us?  
Contact [book.department@intechopen.com](mailto:book.department@intechopen.com)

Numbers displayed above are based on latest data collected.  
For more information visit [www.intechopen.com](http://www.intechopen.com)



# Intracranial Plaque Imaging Using High-Resolution Magnetic Resonance Imaging: A Pictorial Review

Kuniyasu Niizuma, Hiroaki Shimizu and Teiji Tominaga  
*Department of Neurosurgery, Tohoku University Graduate School of Medicine, Sendai, Japan*

## 1. Introduction

Intracranial atherosclerotic disease is defined as the development, progression, and complication of atherosclerotic lesions on intracranial large arteries. It has been considered to be the most common cause of ischemic stroke worldwide (Gorelick et al., 2008; Kim et al., 2006; Won et al., 1998).

Intracranial atherosclerotic disease is normally detected by hemodynamically relevant intracranial stenosis using luminography-based methods. However, from the extracranial study, it is well known that lumen diameter can be maintained due to remodeling of the arteries in spite of wall thickening (Glagov et al., 1987), suggesting conventional luminography-based methods might underestimate atherosclerotic disease. Arenillas (Arenillas, 2001) summarized limitations of conventional approach. First, it only detects advanced stage of intracranial atherosclerotic disease with luminal narrowing. Second, it cannot provide the histopathologic information of the intracranial atherosclerotic plaque. Third, it is unable to differentiate atherostenosis from stenosis caused by other entities.

Intracranial small infarctions result from atherosclerosis of the parent arteries, which may occlude the orifice of the perforating artery as branch atheromatous disease. Small infarctions also result from lipohyalinosis or microatheromatous, or embolic occlusion of a perforating artery (Adams et al., 1993; Cho et al., 2007; Donnan et al., 1991; Fisher, 1965, 1982). Since branch atheromatous disease is more aggressive than typical lacunar infarctions, intensive antiplatelette or anti-thrombic therapy may be needed for the treatment of branch atheromatous disease. However, the diagnosis of these small infarctions is still difficult because conventional techniques are limited to detect the plaque.

Studies regarding intracranial plaque image have achieved to reveal the mechanism of small infarctions or to diagnose early stage of intracranial atherosclerotic disease. In this report, we address such new magnetic resonance imaging techniques to detect intracranial plaques.

## 2. Intracranial plaque image

Recently, high-resolution magnetic resonance imaging has been reported to visualize intracranial atherosclerotic plaques (Klein et al., 2005, 2006; Niizuma et al., 2008). It can

detect not only stenotic but nonstenotic intracranial atheromatous plaques or vessel wall thickening. It might provide the information regarding well-known determinants of plaque instability such as richer content in lipid, intraplaque hemorrhage and inflammatory cell infiltration (Chen et al., 2008)

For high-resolution magnetic resonance imaging, pulse sequences were varied. T1-weighted, T2-weighted, moderate T2-weighted, proton density-weighted, and/or postcontrast T1-weighted images by gadolinium-diethylenetriaminepenta-acetic acid with/without multicontrast black blood sequences were used.

### 2.1 Basilar artery plaque imaging (Fig. 1)

The infarction mechanism of basilar perforating artery territory can be divided into branch atheromatous disease, cardiogenic embolism, and small vessel disease. Especially, basilar branch atheromatous disease is the most frequent cause of basilar perforating artery territory infarctions (Bassetti et al., 1996; Kumral et al., 2002). Basilar artery atheromatous plaque can block at the orifice of the branch, or can extend into the perforating branch, which results in parapatent or deep pontine infarctions (Fisher & Caplan, 1971; Fisher, 1977).

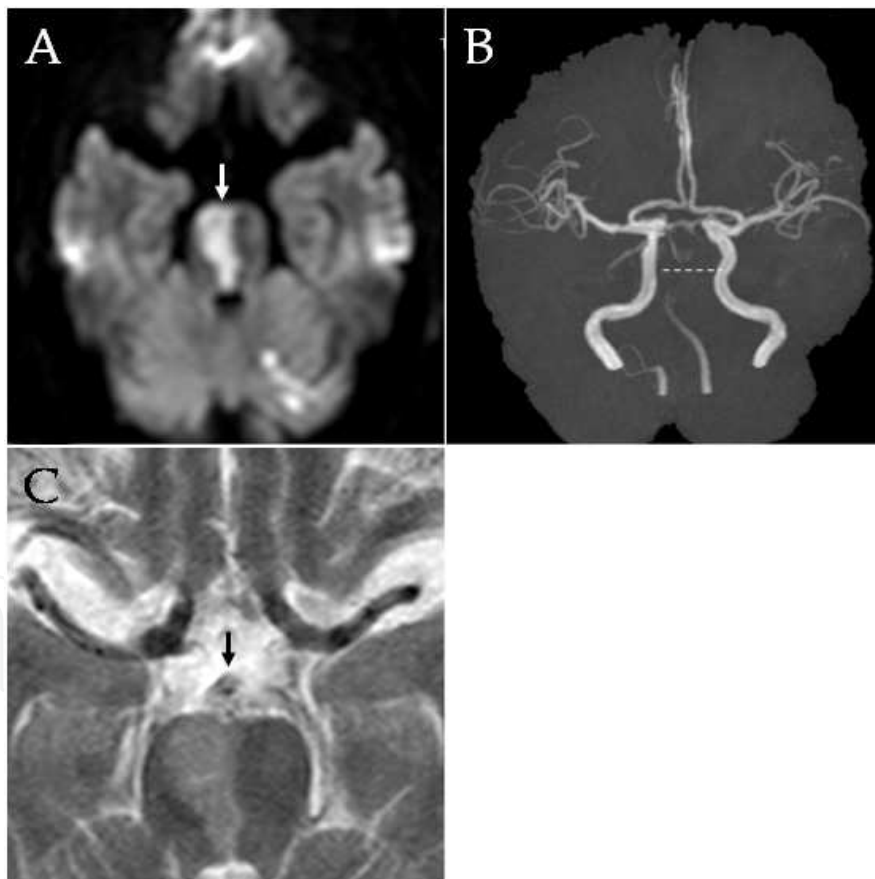


Fig. 1. Basilar artery plaque image using 1.5 tesla magnetic resonance imaging scanner. A: Axial diffusion-weighted image demonstrating a right paramedian pontine high-intensity lesion (arrow). B: Magnetic resonance angiography showing severe stenosis of the basilar artery. C: T2-weighted image at the level of the dotted line on B (TR/TE 3500/100, matrix size  $254 \times 320$ ), presenting plaque on the vessel wall (arrow).

To detect basilar artery plaques of the basilar artery, Klein et al used high-resolution magnetic resonance imaging with a 1.5-tesla system (Klein et al., 2005, 2010). Twenty-four consecutive patients with the paramedian pontine infarctions underwent high-resolution magnetic resonance imaging, which revealed basilar atherosclerotic plaques in up to 70% patients. Plaque was identified in all patients with severe or moderate stenosis as well as in some patients with normal findings on magnetic resonance angiography (Klein et al., 2005).

Basilar artery plaque could also be a prevalent mechanism not only in the paramedian pontine infarctions but also lacunar or small deep pontine infarctions (Klein et al., 2010). High-resolution magnetic resonance imaging was performed on 43 consecutive patients of medial pontine infarct, including lacunar or small pontine infarction. Basilar artery plaque was detected in 73% of lacunar or small deep pontine infarction cases. This pattern was similar to the cases of paramedian pontine infarctions.

## 2.2 Middle cerebral artery plaque imaging (Fig. 2-4)

The infarct mechanism in the middle cerebral perforating arterial territory can be divided into four subtypes regardless of lesion size (Cho et al., 2007): (1) middle cerebral artery disease, if there is a corresponding ipsilateral atherosclerotic middle cerebral artery lesion without cardiogenic embolism or atherosclerotic lesion proximal to the middle cerebral artery lesion; (2) internal carotid artery disease, if there is significant ipsilateral internal carotid artery stenosis (> 50%) without evidence of middle cerebral artery disease or cardiogenic embolism; (3) cardiogenic embolism, if there is emboligenic heart disease based on stroke classification criteria developed by the investigators of the Trial of Org 10172 in Acute Stroke Treatment (Adams et al., 1993) in the absence of atherosclerotic diseases in cerebral vessels; and (4) small vessel disease, if there is no cardiogenic embolism, middle cerebral artery disease, or internal carotid artery disease. People with symptomatic middle cerebral artery disease have overall stroke risk of 12.5% per year (Kern et al., 2005). Since the outcome of middle cerebral artery disease was poor, diagnosis of middle cerebral artery disease is clinically important.

Middle cerebral artery plaque imaging was first reported by on 6 patients of severe middle cerebral artery stenosis using 1.5-tesla magnetic resonance imaging system (Klein et al., 2006). Plaque was clearly detected on the middle cerebral artery wall in all cases. Quantitative measurements presented that lumen area was significantly larger in normal middle cerebral artery segments compared with atherosclerotic ones.

Then several authors reported high-resolution magnetic resonance imaging with a 3-tesla system, by which they detected plaques on the middle cerebral artery and/or wall thickening (Li et al., 2009; Niizuma et al., 2008; Ryu et al., 2009; Swartz et al., 2009; Turan et al., 2011; Xu et al., 2010). Niizuma et al (Niizuma et al., 2008) demonstrated moderate T2-weighted high-resolution magnetic resonance imaging showed plaques on the middle cerebral artery in cases of corona radiate infarction, which indicated the etiology of the infarction (Fig. 2-4). Swartz et al (Swartz et al., 2009) presented that high-resolution magnetic resonance imaging may distinguish the enhancement patterns of different pathologies such as atherosclerosis, inflammation, and other pathologies of the intracranial vessel wall. Ryu et al (Ryu et al., 2009) found multicontrast-weighted black blood imaging have the potential to characterize atherosclerotic plaques. Li et al (Li et al., 2009) and Xu et al (Xu et al., 2010) demonstrated that T2-weighted high-resolution magnetic resonance

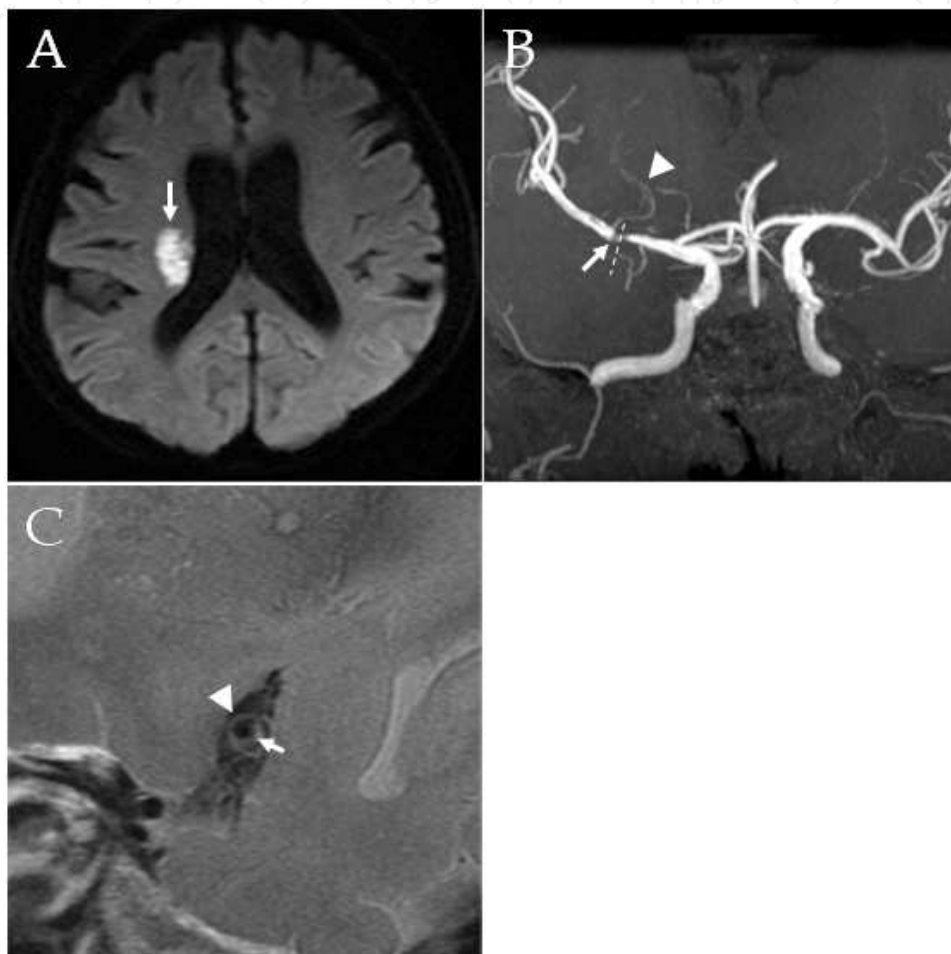


Fig. 2. Middle cerebral artery plaque which is also detected by magnetic resonance angiography (modified from Niizuma et al., 2008). A: Axial diffusion-weighted image demonstrating a high-intensity lesion, 20 mm in diameter, in the right corona radiata (arrow). B: Magnetic resonance angiography processed by partial maximum intensity projection indicating the relationship between the stenotic area (arrow) and lateral striate arteries (arrowhead). C: High-resolution magnetic resonance image perpendicular to the right MCA, at the level of the dotted line on B (TR/TE 2800/50.8, FOV 12 cm  $\times$  12 cm, matrix size 512  $\times$  256, slice thickness 2 mm, interslice gap 0.3 mm, NEX 5), presenting the lumen of the right middle cerebral artery (arrow) and plaque on the vessel wall (arrowhead).

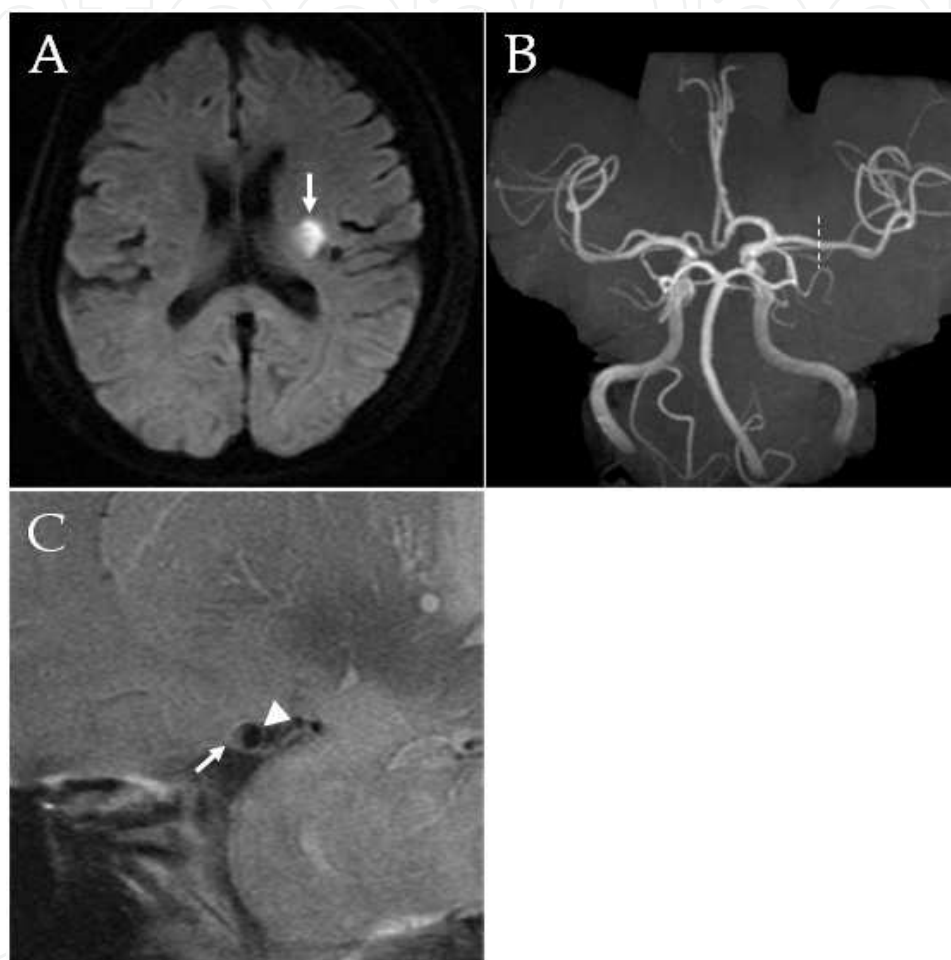


Fig. 3. Middle cerebral artery plaque which cannot be detected by magnetic resonance angiography (modified from Niizuma et al., 2008). A: Axial Diffusion-weighted image demonstrating a high-intensity lesion, 12 mm in diameter, in the left corona radiata (arrow). B: Magnetic resonance angiography showing no evidence of atherosclerosis. C: High-resolution magnetic resonance image perpendicular to the left MCA, at the level of the dotted line in B (TR/TE 2800/50.8, FOV 12 cm  $\times$  12 cm, matrix size 512  $\times$  256, slice thickness 2 mm, interslice gap 0.3 mm, NEX 5), presenting the lumen of the left middle cerebral artery (arrow) and plaque on the vessel wall (arrowhead), despite the apparently normal magnetic resonance angiography.

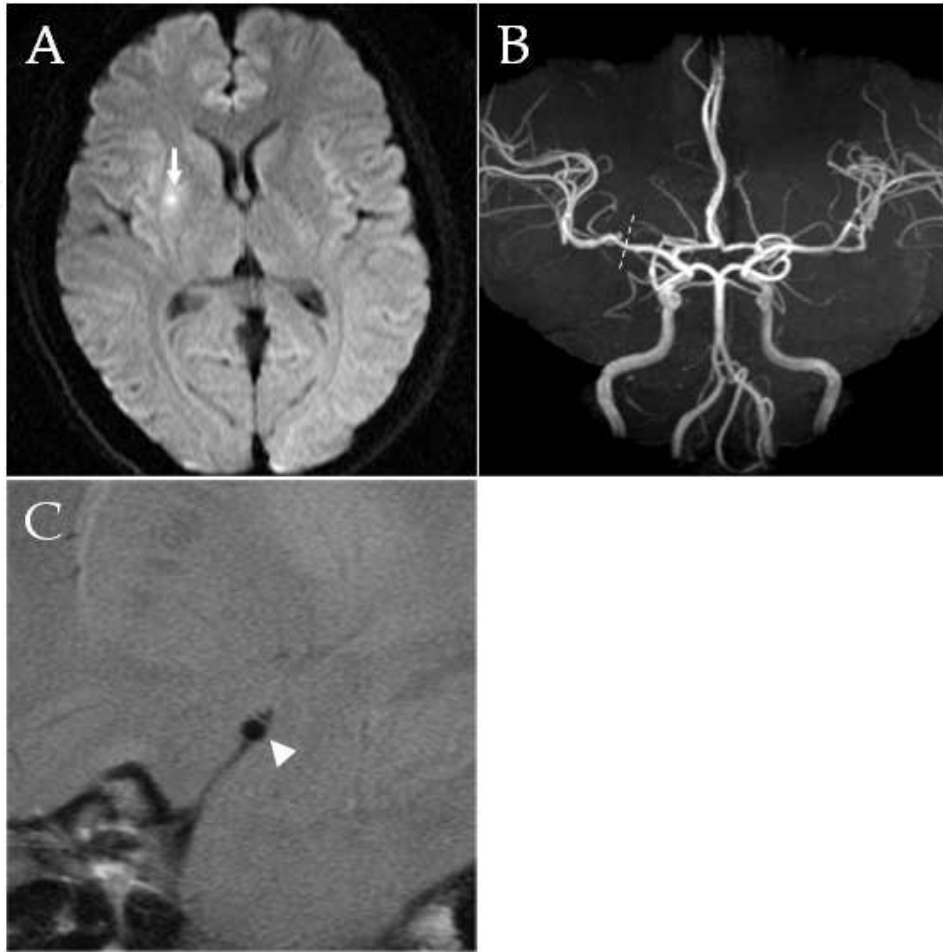


Fig. 4. No detection of middle cerebral artery plaque on the right lacunar infarction (modified from Niizuma et al., 2008). Axial Diffusion-weighted image demonstrating a high-intensity lesion in the right putamen (arrow) and corona radiata. B: Magnetic resonance angiography showing no evidence of atherosclerosis. C: High-resolution magnetic resonance image perpendicular to the right middle cerebral artery, at the level of the dotted line in B (TR/TE 2800/50.8, FOV 12 cm  $\times$  12 cm, matrix size 512  $\times$  256, slice thickness 2 mm, interslice gap 0.3 mm, NEX 5), presenting the lumen of the middle cerebral artery (arrowhead), though there were no plaques on the vessel wall.

imaging differentiated wall thickening, arterial remodeling, and atherosclerotic plaque in symptomatic and asymptomatic patients with intracranial middle cerebral artery stenosis.

### 2.3 High-field magnetic resonance imaging

Although 3.0-tesla magnetic resonance imaging clearly demonstrated plaques and abnormal intracranial vessel walls, it seemed difficult to show the healthy vessel wall (Li et al., 2009; Niizuma et al., 2008; Ryu et al., 2009; Swartz et al., 2009; Turan et al., 2011; Xu et al., 2010). Van der Kolk et al (Van der Kolk et al., 2011) aimed to depict the vessel wall of intracranial

arteries, also in the absence of disease. They used a volumetric turbo spin-echo sequence with inversion recovery and magnetization preparation using 7.0-tesla system. They achieved high image resolution and sensitivity, thus walls of major arteries of the circle of Willis were identified in all cases. 7.0-tesla high-resolution magnetic resonance imaging depicted that 66% of the patients had more than one lesions in major intracranial arteries, whereas only 27% of the lesions caused stenosis on magnetic resonance angiography. They concluded that 7.0-tesla high-resolution magnetic resonance imaging has possibility to study the role of intracranial arterial wall pathology in more detail.

## 2.4 Plaque instability

Richer content in lipid, intraplaque hemorrhage and inflammatory cell infiltration are well-known determinants of plaque instability (Chen et al., 2008). Now, magnetic resonance imaging has the ability to differentiate such plaque components in addition to determining the degree of luminal narrowing of the carotid plaques (Fayad & Fuster, 2000). The use of gadolinium-diethylenetriaminepenta-acetic acid may enhance detection of wall lesions and determination of plaque instability. In the carotid artery, plaque enhancement may indicate neovascularized fibrous tissue that correlates with unstable plaque (Yuan et al., 2002a). Multisequence magnetic resonance imaging can identify different carotid plaque components with high sensitivity, specificity, and accuracy not only *ex vivo* but also *in vivo* (Shinnar et al., 1999; Yuan et al., 2001). High-resolution magnetic resonance imaging of the carotid plaque can distinguish advanced lesions from early and intermediate atherosclerotic plaque (Cai et al., 2002).

As intracranial plaque instability, Meyers et al (Meyers et al., 2009) reported that intraplaque hemorrhage was detected by intravascular ultrasound in symptomatic intracranial atherosclerotic disease, indicating that intracranial atherosclerotic plaques can become symptomatic after complication by intraplaque hemorrhage similar to coronary artery plaques. Moreover, Turan et al (Turan et al., 2011) observed intraplaque high signal intensity lesion in the symptomatic middle cerebral artery stenosis using high-resolution T1-weighted image. Its characteristics were similar to intraplaque hemorrhage on the carotid arteries. These findings suggest that high-resolution magnetic resonance imaging allows characterization of intraplaque hemorrhage *in vivo*.

The diagnostic value of different enhanced patterns of intracranial plaques by gadolinium-diethylenetriaminepenta-acetic acid is not determined, although plaque enhancement is commonly considered to be a marker of symptomatic or unstable plaque. Swartz et al (Swartz et al., 2009) described that enhanced patterns of plaques might differentiate pathologies such as atherosclerosis, inflammation, and other pathologies of the intracranial vessel wall (Swartz et al., 2009). However, Klein et al (Klein et al., 2006) described a case of asymptomatic middle cerebral artery stenosis with strongly enhanced plaque by gadolinium-diethylenetriaminepenta-acetic acid, indicating plaque enhancement does not always indicate symptomatic plaque. Further studies are needed to determine this issue.

## 2.5 Limitations

For clinical use of high-resolution magnetic resonance imaging to detect intracranial plaques, following issues must be considered. First, whether the plaque is a true plaque must be more confirmed. Other modalities such as ultrasound, pathology, or intraoperative



observation should be compared with findings of high-resolution magnetic resonance image. Although previous studies of carotid artery plaques demonstrated a significant correlation between pathological findings and plaque characteristics detected by high-resolution magnetic resonance imaging (Honda et al., 2006; Toussaint et al., 1996; Yuan et al., 2002b), histological analyses are required to evaluate this technique in detail.

Second, high-resolution magnetic resonance imaging cannot demonstrate a direct causative relationship between plaque and infarctions, even if plaques are located at the level of the perforating arteries. Because of the small size of intracranial arteries, spatial resolution needs to be more optimized. Future technical improvements for imaging perforating arteries or high-field systems will reveal the relationship of plaque and infarctions.

Third, the relationships among signal pattern of high-resolution magnetic resonance imaging, findings of magnetic resonance angiography, clinical symptoms, and characteristics of the plaques including thickness and distributions, and vulnerability, remain unclear, although cumulative evidences indicate intracranial plaque imaging allows characterization of plaques *in vivo*.

### 3. Conclusions

High-resolution magnetic resonance imaging can identify plaques on the walls of basilar artery or middle cerebral artery. This technique compensates the limitation of magnetic resonance angiography. However, further studies are needed to evaluate the limitations as described above. Besides these limitations, we consider that high-resolution magnetic resonance imaging is promising for the direct identification of intracranial arterial plaques and for the accurate estimation of the pathogenesis of the infarction, which will have an impact on the treatment strategy.

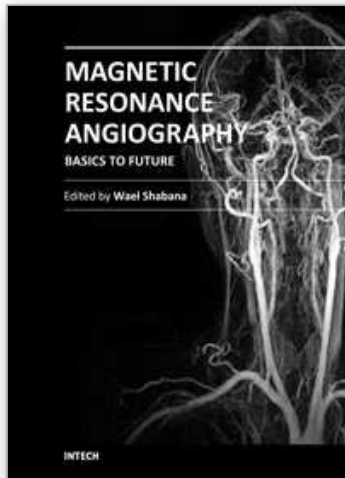
Prospective studies or long term follow up studies are needed to evaluate the accuracy and reproducibility.

### 4. References

- Adams, HP Jr.; Bendixen, BH.; Kappelle, LJ.; Biller, J.; Love, BB.; Gordon, DL. & Marsh, EE 3rd. (1993). Classification of subtype of acute ischemic stroke. Definitions for use in a multicenter clinical trial. *Stroke*, Vol.24, No.1, (January 1993), pp. 35-41, ISSN 0039-2499
- Arenillas, JF. (2011). Intracranial atherosclerosis: current concepts. *Stroke*, Vol.42, No.1 supplemental, (January 2011), pp. S20-S23, ISSN 1524-4628
- Bassetti, C.; Bogousslavsky, J.; Barth, A. & Regli, F. (1996). Isolated infarcts of the pons. *Neurology*, Vol.46, No.1, (January 1996), pp. 165-175, ISSN 0028-3878
- Cai, JM.; Hatsukami, TS.; Ferguson, MS.; Small, R.; Polissar, NL. & Yuan, C. (2002). Classification of human carotid atherosclerotic lesions with in vivo multicontrast magnetic resonance imaging. *Circulation*, Vol.106, No.11, (September 2002), pp. 1368-1373, ISSN 1524-4539
- Chen, XY.; Wong, KS.; Lam, WW.; Zhao, HL. & Ng, HK. (2008). Middle cerebral artery atherosclerosis: histological comparison between plaques associated with and not associated with infarct in a postmortem study. *Cerebrovascular diseases*, Vol.25, No.1-2, (2008), pp. 74-80, ISSN 1421-9786
- Cho, AH.; Kang, DW.; Kwon, SU. & Kim, JS. (2007). Is 15 mm size criterion for lacunar infarction still valid? A study on strictly subcortical middle cerebral artery territory

- infarction using diffusion-weighted MRI. *Cerebrovascular Diseases*, Vol.23, No.1, (2007), pp. 14-19, ISSN 1015-9770
- Donnan, GA.; Bladin, PF.; Berkovic SF.; Longley, WA. & Saling, MM. (1991). The stroke syndrome of striatocapsular infarction. *Brain*, Vol.114 (Pt 1A), (February 1991), pp. 51-70, ISSN 0006-8950
- Feyad, ZA. & Fuster, V. (2000). Characterization of atherosclerotic plaques by magnetic resonance imaging. *Annals of the New York Academy of Sciences*, Vol.902, (May 2000), pp. 173-186, ISSN 0077-8923
- Fisher, CM. (1965). Lacunes: small, deep cerebral infarcts. *Neurology*, Vol.15, (August 1965), pp. 774-784, ISSN 0028-3878
- Fisher, CM. & Caplan, LR. (1971). Basilar artery branch occlusion: a cause of pontine infarction. *Neurology*, Vol.21, No.9, (September 1971), pp. 900-905, ISSN 0028-3878
- Fisher, CM. (1977). Bilateral occlusion of basilar artery branches. *Journal of Neurology, Neurosurgery, and Psychiatry*, Vol.40, No.12, (December 1977), pp. 1182-1189, ISSN 0022-3050
- Fisher, CM. (1982). Lacunar strokes and infarcts: a review. *Neurology*, Vol.32, No.8, (August 1982), pp. 871-876, ISSN 0028-3878
- Glagov, S.; Weisenberg, E.; Zarins, CK.; Stankunavicius, R. & Kolettis, GJ. (1987). Compensatory enlargement of human atherosclerotic coronary arteries. *The New England Journal of Medicine*, Vol.316, (May 1987), pp. 1371-1375, ISSN 0028-4793
- Gorelick, PB.; Wong, KS.; Bae, HJ. & Pandey, DK. (2008). Large artery intracranial occlusive disease: a large worldwide burden but a relatively neglected frontier. *Stroke*, Vol.39, No.8, (August 2008), pp. 2396-2399, ISSN 1524-4628
- Honda, M.; Kitagawa, N.; Tsutsumi, K.; Nagata, I.; Morikawa, M. & Hayashi, T. (2006). High-resolution magnetic resonance imaging for detection of carotid plaques. *Neurosurgery*, Vol.58, No.2, (February 2006), pp. 338-346, ISSN 1524-4040
- Kern, R.; Steinke, W.; Daffertshofer, M.; Prager, R. & Hennerici M. (2005). Stroke recurrences in patients with symptomatic vs asymptomatic middle cerebral artery disease. *Neurology*, Vol.65, No.6, (September 2005), pp. 859-864, ISSN 1526-632X
- Kim, JT.; Yoo, SH.; Kwon, JH.; Kwon, SU. & Kim, JS. (2006). Subtyping of ischemic stroke based on vascular imaging: analysis of 1167 acute, consecutive patients. *Journal of Clinical Neurology*, Vol.2, No.4, (December 2006), pp. 225-230, ISSN 2005-3013
- Klein, IF.; Lavallée, PC.; Schouman-Claeys, E. & Amarenco, P. (2005). High-resolution MRI identifies basilar artery plaques in paramedian pontine infarct. *Neurology*, Vol.64, No.3, (February 2005), pp. 551-552, ISSN 1526-632X
- Klein, IF.; Lavallée, PC.; Touboul, PJ.; Schouman-Claeys, E. & Amarenco, P. (2006). Middle cerebral artery plaque imaging by high-resolution MRI. *Neurology*, Vol.67, No.2, (July 2006), pp. 327-329, ISSN 1526-632X
- Klein, IF.; Lavallée, PC.; Mazighi, M.; Schouman-Claeys, E.; Labreuche, J. & Amarenco, P. (2010). Basilar artery atherosclerotic plaques in paramedian and lacunar pontine infarctions: a high-resolution MRI study. *Stroke*, Vol.41, No.7, (July 2010), pp. 1405-1409, ISSN 1524-4628
- Kumral, E.; Bayülkem, G. & Evyapan, D. (2002). Clinical spectrum of pontine infarction. Clinical-MRI correlations. *Journal of Neurology*, Vol.249, No.12, (December 2002), pp. 1659-1670, ISSN 0340-5354
- Li, ML.; Xu, WH.; Song, L.; Feng, F.; You, H.; Ni, J.; Gao, S.; Cui, LY. & Jin, ZY. (2009). Atherosclerosis of middle cerebral artery: evaluation with high-resolution MR imaging at 3T. *Atherosclerosis*, Vol.205, No.2, (June 2009), pp. 447-452, ISSN 1879-1484

- Meyers, PM.; Schumacher, HC.; Gray, WA.; Fifi, J.; Gaudet, JG.; Heyer, EJ. & Chong, JY. (2009). Intravascular ultrasound of symptomatic intracranial stenosis demonstrates atherosclerotic plaque with intraplaque hemorrhage: a case report. *Journal of Neuroimaging*, Vol.19, No.3, (July 2009), pp. 266-270, ISSN 1552-6569
- Niizuma, K.; Shimizu, H.; Takada, S. & Tominaga, T. (2008). Middle cerebral artery plaque imaging using 3-Tesla high-resolution MRI. *Journal of Clinical Neuroscience*, Vol.15, No.10, (October 2008), pp. 1137-1141, ISSN 0967-5868
- Ryu, CW.; Jahng, GH.; Kim, EJ.; Choi, WS. & Yang, DM. (2009). High resolution wall and lumen MRI of the middle cerebral arteries at 3 tesla. *Cerebrovascular diseases*, Vol.27, No.5, (2009), pp. 433-442, ISSN 1421-9786
- Shinnar, M.; Fallon, JT.; Wehrli, S.; Levin, M.; Dalmacy, D.; Fayad, ZA.; Badimon, JJ.; Harrington, M.; Harrington, E. & Fuster, V. (1999). The diagnostic accuracy of ex vivo MRI for human atherosclerotic plaque characterization. *Arteriosclerosis, thrombosis, and vascular biology*, Vol.19, No.11 (November 1999), pp. 2756-2761, ISSN 1079-5642
- Swartz, RH.; Bhuta, SS.; Farb, RI.; Agid, R.; Willinsky, RA.; Terbrugge, KG.; Butany, J.; Wasserman, BA.; Johnstone, DM.; Silver, FL. & Mikulis, DJ. (2009). Intracranial arterial wall imaging using high-resolution 3-tesla contrast-enhanced MRI. *Neurology*, Vol.72, No.7, (February 2009), pp. 627-634, ISSN 1526-632X
- Toussaint, JF.; LaMuraglia, GM.; Southern, JF.; Fuster, V. & Kantor, HL. (1996). Magnetic resonance images lipid, fibrous, calcified, hemorrhagic, and thrombotic components of human atherosclerosis in vivo. *Circulation*, Vol.94, No.5, (September 1996), pp. 932-938, ISSN 0009-7322
- Turan, TN.; Bonilha, L.; Morgan, PS.; Adams, RJ. & Chimowitz, MI. (2011). Intraplaque hemorrhage in symptomatic intracranial atherosclerotic disease. *Journal of Neuroimaging*, Vol.21, No.2, (April 2011), pp. e159-e161, ISSN 1552-6569
- Van der Kolk, AG.; Zwanenburg, JJ.; Brundel, M.; Biessels, GJ.; Visser, F.; Luijten, PR. & Hendrikse, J. (2011). Intracranial Vessel Wall Imaging at 7.0-T MRI. *Stroke*, Epub ahead of print, (July 2011), pp. e159-e161, ISSN 1524-4628
- Wong, KS.; Huang, YN.; Gao, S.; Lam, WWM.; Chan, YL. & Kay, R. (1998). Intracranial stenosis in Chinese patients with acute stroke. *Neurology* Vol.50, No.3, (March 1998), pp. 812-813, ISSN 0028-3878
- Xu, WH.; Li, ML.; Gao, S.; Ni, J.; Zhou, LX.; Yao, M.; Peng, B.; Feng, F.; Jin, ZY. & Cui, LY. (2010). In vivo high-resolution MR imaging of symptomatic and asymptomatic middle cerebral artery atherosclerotic stenosis. *Atherosclerosis*, Vol.212, No.2, (October 2010), pp. 507-411, ISSN 1879-1484
- Yuan, C.; Mitsumori, LM.; Ferguson, MS.; Polissar, NL.; Echelard, D.; Ortiz, G.; Small, R.; Davies, JW.; Kerwin, WS. & Hatsukami, TS. (2001). In vivo accuracy of multispectral magnetic resonance imaging for identifying lipid-rich necrotic cores and intraplaque hemorrhage in advanced human carotid plaques. *Circulation*, Vol.104, No.17, (October 2001), pp. 2051-2056, ISSN 1524-4539
- Yuan, C.; Kerwin, WS.; Ferguson, MS.; Polissar, N.; Zhang, S.; Cai, J. & Hatsukami, TS. (2002a). Contrast-enhanced high resolution MRI for atherosclerotic carotid artery tissue characterization. *Journal of Magnetic Resonance Imaging*, Vol.15, No.1, (January 2002), pp. 62-67, ISSN 1053-1807
- Yuan, C.; Miller, ZE.; Cai, J. & Hatsukami T. (2002b). Carotid atherosclerotic wall imaging by MRI. *Neuroimaging Clinics of North America*, Vol.12, No.3, (August 2002), pp. 391-401, ISSN 1052-5149



## **Magnetic Resonance Angiography Basics to Future**

Edited by Prof. Wael Shabana

ISBN 978-953-51-0401-8

Hard cover, 94 pages

**Publisher** InTech

**Published online** 21, March, 2012

**Published in print edition** March, 2012

As MRI has paved its role in diagnostic angiography. MRA has the potential to provide more physiological and pathophysiological data over the disease in addition to the anatomical information. This book is divided into three sections. The first section discusses the basics of MRI angiography. It starts with focus on the contrast agents that are mainly used in MR angiography with detailed discussion of advantage and limitations of different types of contrast. The second chapter is oriented more towards the technical consideration that contribute to good quality examination, both the non contrast and contrast based sequences from black to bright blood imaging , contrast enhanced MRA, review of clinical application of MRA in different body systems and MR venography. The second section reviews the clinical application of MRI mainly in the head and neck and brain ischemia imaging. The new high resolution intracranial plaque imaging of the branch athermanous disease, to the hemodynamic of intracranial atherosclerotic stroke and quantitative MRA imaging in neurovascular imaging, are the topics in this section. Also this section covers the future prospective and the new frontiers MRI angiography is exploring. In the third section, MRA of aortic disease in children with emphasis on cardiac MRA.

### **How to reference**

In order to correctly reference this scholarly work, feel free to copy and paste the following:

Kuniyasu Niizuma, Hiroaki Shimizu and Teiji Tominaga (2012). Intracranial Plaque Imaging Using High-Resolution Magnetic Resonance Imaging: A Pictorial Review, Magnetic Resonance Angiography Basics to Future, Prof. Wael Shabana (Ed.), ISBN: 978-953-51-0401-8, InTech, Available from: <http://www.intechopen.com/books/magnetic-resonance-angiography-basics-to-future/intracranial-plaque-imaging-using-high-resolution-magnetic-resonance-imaging-a-pictorial-review>

**INTECH**  
open science | open minds

### **InTech Europe**

University Campus STeP Ri  
Slavka Krautzeka 83/A  
51000 Rijeka, Croatia  
Phone: +385 (51) 770 447  
Fax: +385 (51) 686 166  
[www.intechopen.com](http://www.intechopen.com)

### **InTech China**

Unit 405, Office Block, Hotel Equatorial Shanghai  
No.65, Yan An Road (West), Shanghai, 200040, China  
中国上海市延安西路65号上海国际贵都大饭店办公楼405单元  
Phone: +86-21-62489820  
Fax: +86-21-62489821

© 2012 The Author(s). Licensee IntechOpen. This is an open access article distributed under the terms of the [Creative Commons Attribution 3.0 License](#), which permits unrestricted use, distribution, and reproduction in any medium, provided the original work is properly cited.

IntechOpen

IntechOpen