

We are IntechOpen, the world's leading publisher of Open Access books Built by scientists, for scientists

5,300

Open access books available

129,000

International authors and editors

155M

Downloads

Our authors are among the

154

Countries delivered to

TOP 1%

most cited scientists

12.2%

Contributors from top 500 universities



WEB OF SCIENCE™

Selection of our books indexed in the Book Citation Index
in Web of Science™ Core Collection (BKCI)

Interested in publishing with us?
Contact book.department@intechopen.com

Numbers displayed above are based on latest data collected.
For more information visit www.intechopen.com



Simple Method Using Gelatin-Coated Film for Comprehensively Assaying Gelatinase Activity in Synovial Fluid

Akihisa Kamataki¹, Wataru Yoshida¹, Mutsuko Ishida¹,
Kenya Murakami¹, Kensuke Ochi² and Takashi Sawai¹

¹Iwate Medical University,

²Kawasaki Municipal Kawasaki Hospital
Japan

1. Introduction

Rheumatoid arthritis (RA) is a chronic inflammatory disease that leads to the irreversible destruction of cartilage and bone. An important step in the destruction of tissue is the degradation of extracellular matrix (ECM), whose major components are type II collagen and aggrecan in cartilage, and type I collagen in bone. The synovial fluid of RA patients often contains high concentrations of proteinases, such as those of the matrix metalloproteinase (MMP) and a disintegrin-like and metalloproteinase with thrombospondin type 1 motif (ADAMTS) families, which induce ECM degradation either directly or indirectly and participate in joint destruction. MMP-1, MMP-8, and MMP-13, which function as collagenases, have proteolytic activity towards type I and type II collagen (Chakraborti et al., 2003; Murphy & Nagase, 2008). MMP-2 and MMP-9, termed gelatinases, degrade denatured collagen, while MMP-3 degrades several ECM proteins (Chakraborti et al., 2003). All of them have the gelatinase activity. ADAMTS-4 and ADAMTS-5 are major enzymes involved in the degradation of aggrecan (Arner, 2002) and have low levels of gelatinase activity (Gendron et al., 2007; Lauer-Fields et al., 2007).

The concentration and activity of MMP and ADAMTS enzymes in synovial fluid and serum are measurable using ELISA or enzyme-specific substrates. In particular, MMP-3 is often the target of laboratory tests as a biomarker for disease progression. However, for the elucidation of actual RA progression, it is important to measure the comprehensive activity of all enzymes.

In situ zymography is a method for assessing endogenous protease activity in tissue section (Yan & Blomme, 2003). Film *in situ* zymography (FIZ) using gelatin-coated film is a useful method for assessing the enzymes involved in arthritis (Yoshida et al., 2009). In this method, a frozen tissue section is adhered onto a gelatin-coated film and gelatin degradation loci on the film are then analyzed after a suitable incubation period. A locus of gelatin degradation represents an area where comprehensive enzymatic activity is high. This chapter describes a method for assaying the comprehensive gelatinase activity in synovial fluid using gelatin-coated films for FIZ.

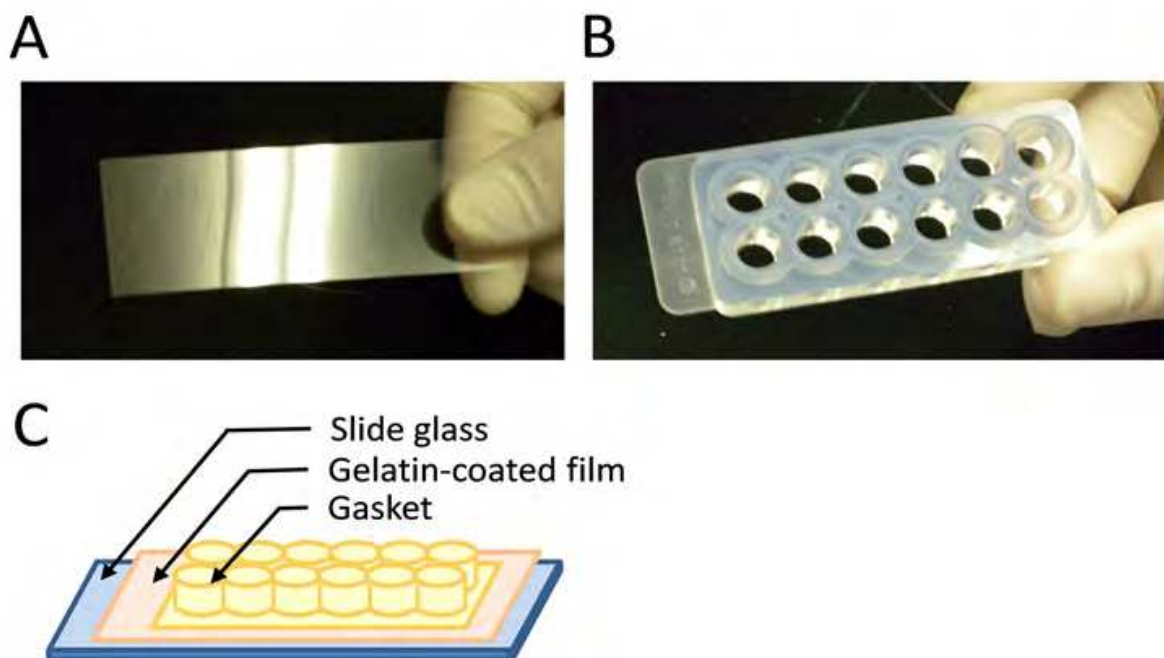
2. Method for synovial fluid analysis using gelatin-coated film

2.1 Synovial fluid samples

Synovial fluid samples were obtained from RA patients, osteoarthritis (OA) patients. Patients provided written consent for collection of synovial fluid samples before the procedure. All RA patients fulfilled the American College of Rheumatology criteria for the classification of RA. OA was diagnosed according to clinical findings. All the OA samples we examined were grade III or IV according to the Kellgren/Lawrence radiographic grading system. This study were approved by the ethics committees at Iwate Medical University

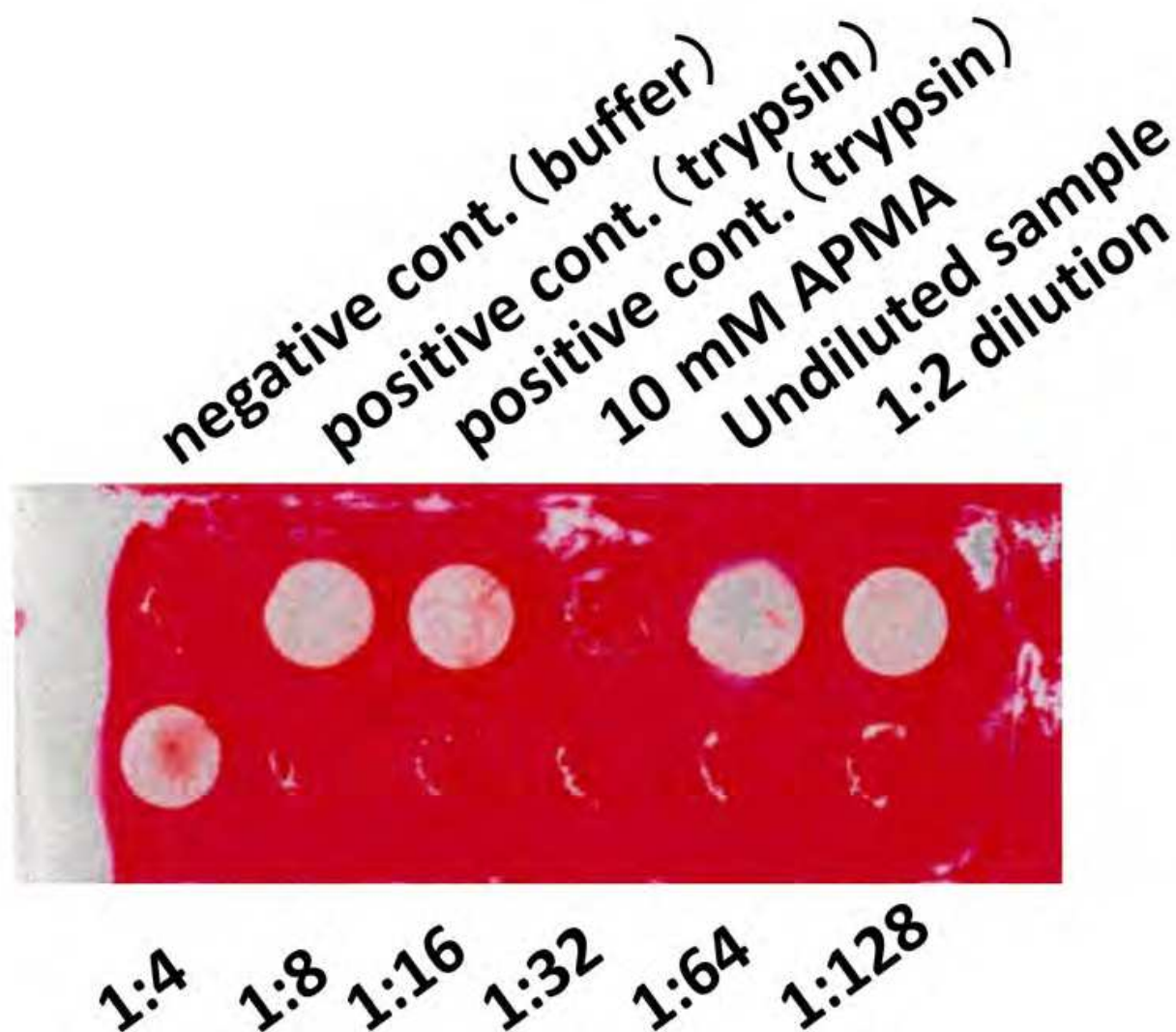
2.2 Method

Gelatin-coated film (Zymo-film; Fuji Film Co., Tokyo, Japan) is adhered onto a slide glass and a silicon gasket with 12 wells (flexi PERM; Greiner Bio-One GmbH, Frickenhausen, Germany) is then attached onto the film using Vaseline (Fig. 1). Two-hundred microliters of a two-fold serial dilution of synovial fluid sample is added into each well. To prevent the sample from evaporating, a lid is placed on the gasket and a moist chamber is used for the incubation period. After overnight incubation at 37 °C, the gelatin-coated film is washed twice with PBS, stained with a 0.2% Ponceau S solution, and then dried at room temperature (Fig. 2).



A: gelatin-coated film, B: gasket, C: illustration of the assembled detection system

Fig. 1. Gelatin-coated film and gasket

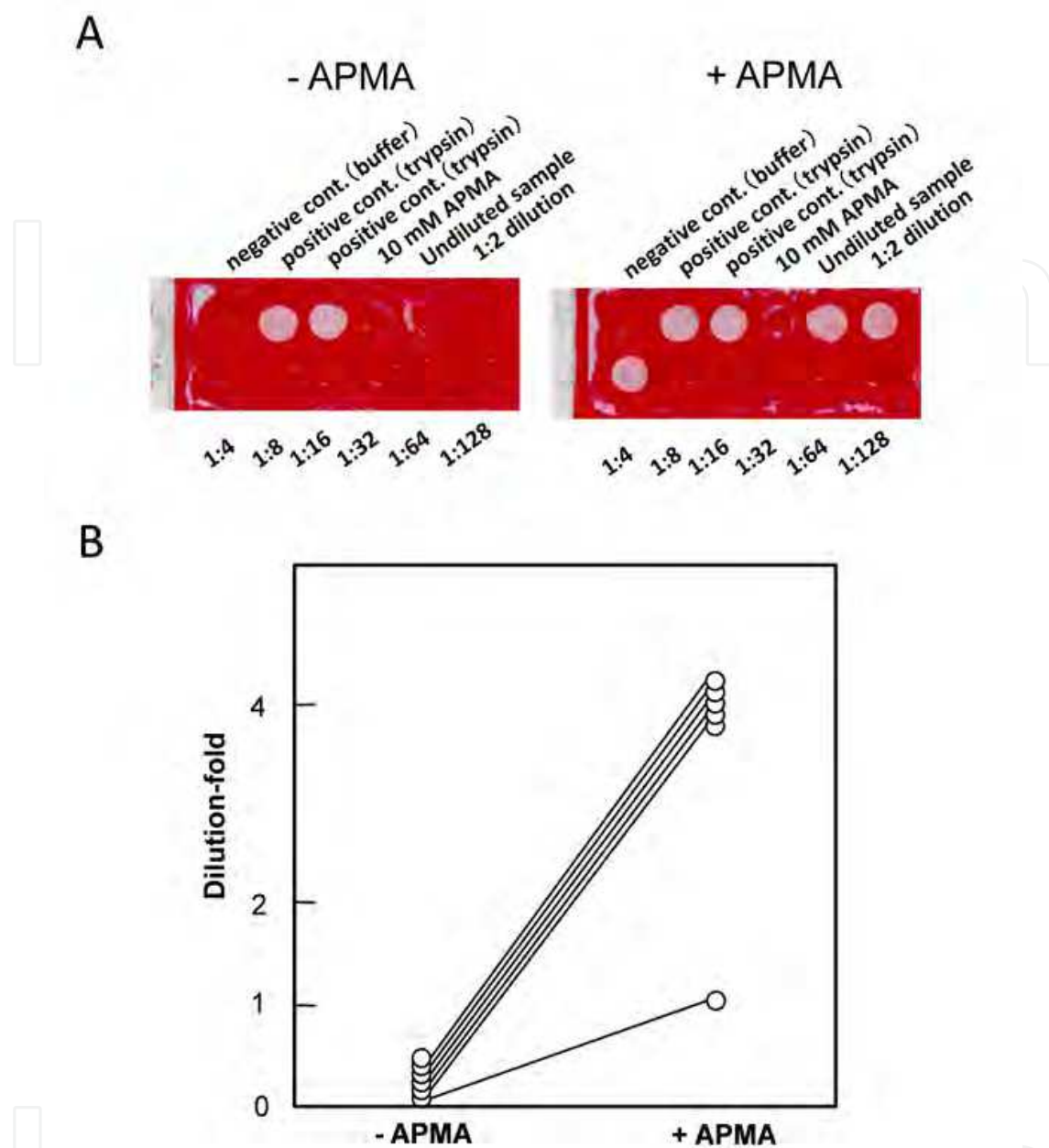


Gelatin-degraded spots are optically transparent. In this case, gelatinase activity was detected in the synovial fluid samples diluted up to 1:4.

Fig. 2. Ponceau S stained gelatin-coated film

PBS is used as a negative control, and a trypsin solution (1 and 10 $\mu\text{g}/\text{ml}$) is used as a positive control. To lower the viscosity of the synovial fluid, 15 units/ μl hyaluronidase from *Streptomyces hyalyticus* (Sigma-Aldrich, St. Louis, MO, USA) is added to the synovial fluid samples. As p-aminophenylmercuric acetate (APMA) activates MMPs (Nagase et al., 1990, 1991), APMA is also added to the samples.

We demonstrated that six synovial fluid samples obtained from RA patients did not show gelatin degradation without APMA treatment (Fig. 3A, left, and Fig. 3B). However, treatment of the same samples with a final concentration of 1 mM APMA resulted in gelatin degradation (Fig. 3A, right, and Fig. 3B).

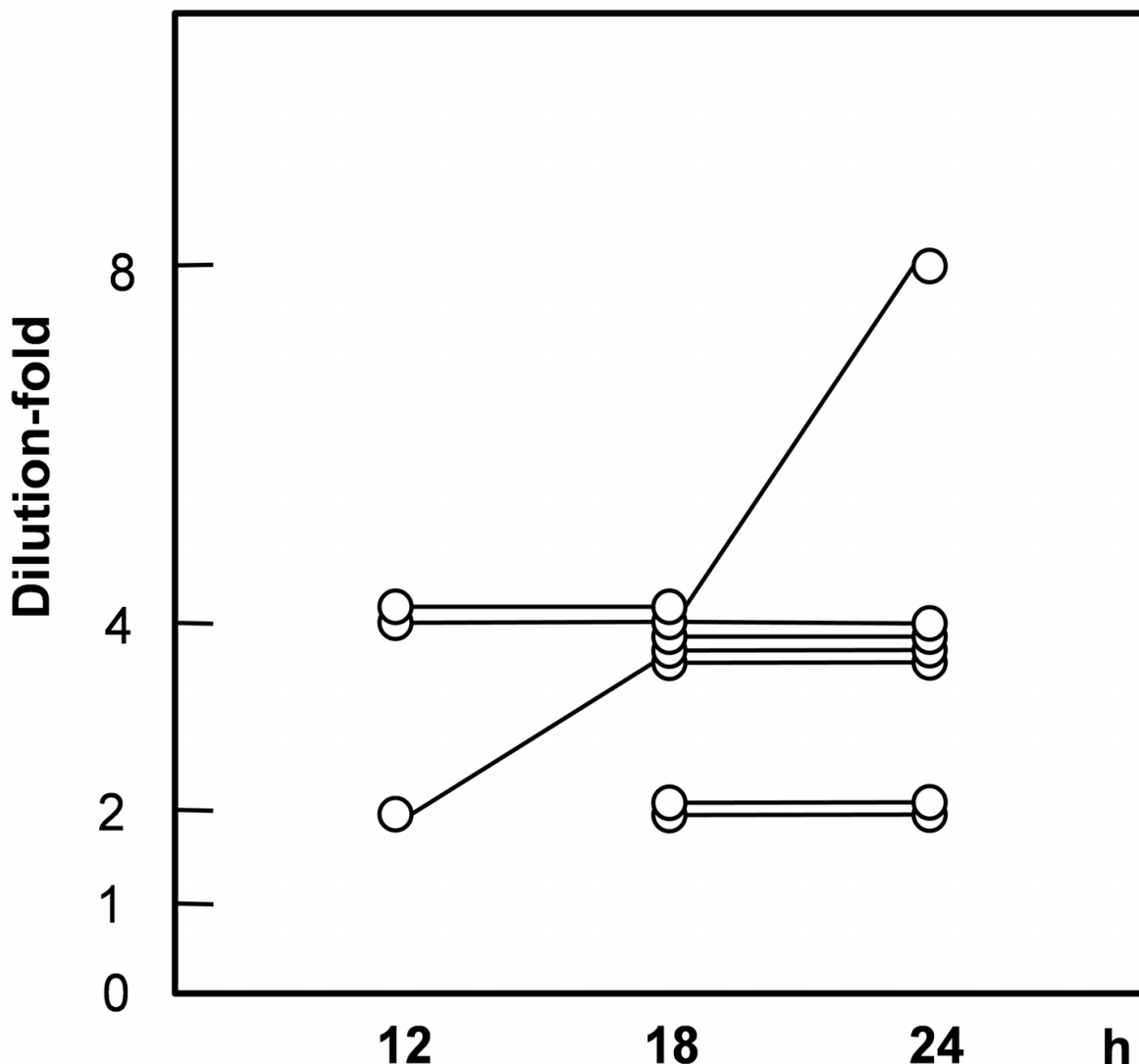


A. Gelatin-coated film incubated with synovial fluid treated with (right) and without (left) APMA. Without APMA treatment, even undiluted sample did not degrade the coated gelatin. With APMA treatment, samples diluted up to 1:4 showed gelatinase activity.

B. Change of gelatinase activity for six synovial fluid samples from RA patients following APMA treatment. The vertical axis shows the highest dilution-fold of samples that was positive for gelatinase activity. Zero indicates negative gelatinase activity.

Fig. 3. Gelatinase activity in synovial fluid samples with or without APMA treatment.

The optimal incubation time for the detection of gelatinase activity was determined by incubating synovial fluid samples for 3, 6, 12, 18, and 24 h on the gelatin-coated film. Only low levels of degradation levels were detected at 3 and 6 h (data not shown). The degradation levels at 18 and 24 h were constant for many samples (Fig. 4). In only one of seven samples, the degradation levels were elevated from 18 to 24 h. In the following experiments, the incubation time was fixed at 24 h.

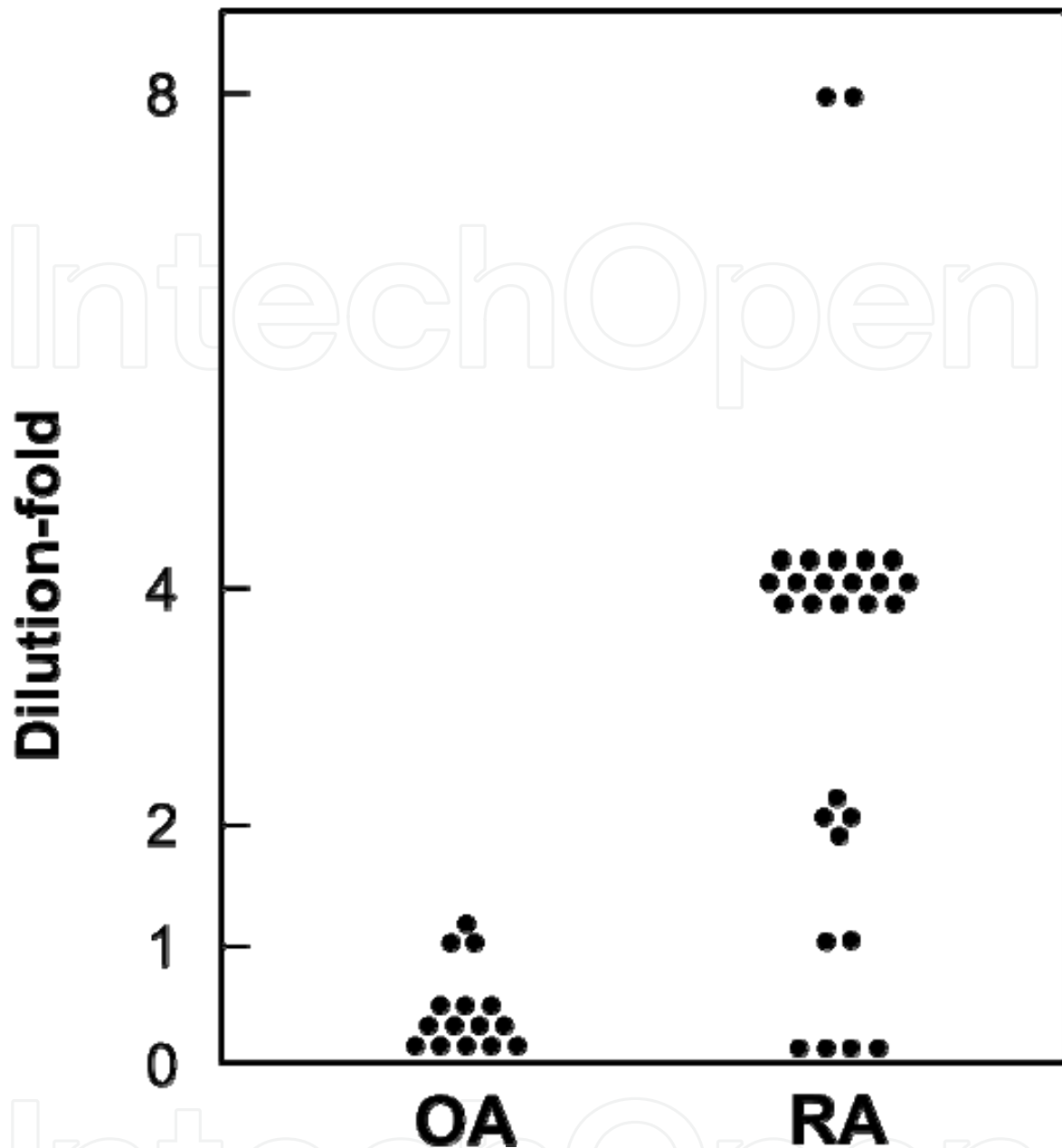


The vertical axis shows the highest dilution-fold of samples that was positive for gelatinase activity. Zero indicates negative gelatinase activity. Gelatin-coated films with synovial fluid samples were incubated for 12, 18, and 24 h.

Fig. 4. Gelatin degradation levels at various incubation times.

3. Comparison of gelatinase activity of RA and OA synovial fluid

Osteoarthritis (OA) is a disease of the joints and is caused by mechanical stress and an imbalance between catabolic and anabolic activities for cartilage (Sun, 2010). Although OA has a different etiology from RA, their mechanisms of pathogenesis are partly shared, with MMPs and ADAMTSs also playing a role in the development of OA (Huang & Wu, 2008; Murphy & Nagase, 2008; Sun, 2010). Therefore, the gelatinase activities of synovial fluid from RA and OA patients were analyzed and compared using the gelatin-coated film assay method. The synovial fluid from RA patients displayed higher proteinase activity than that from OA patients (Fig. 5), a result that is consistent with a previous study (Mahmoud et al., 2005).

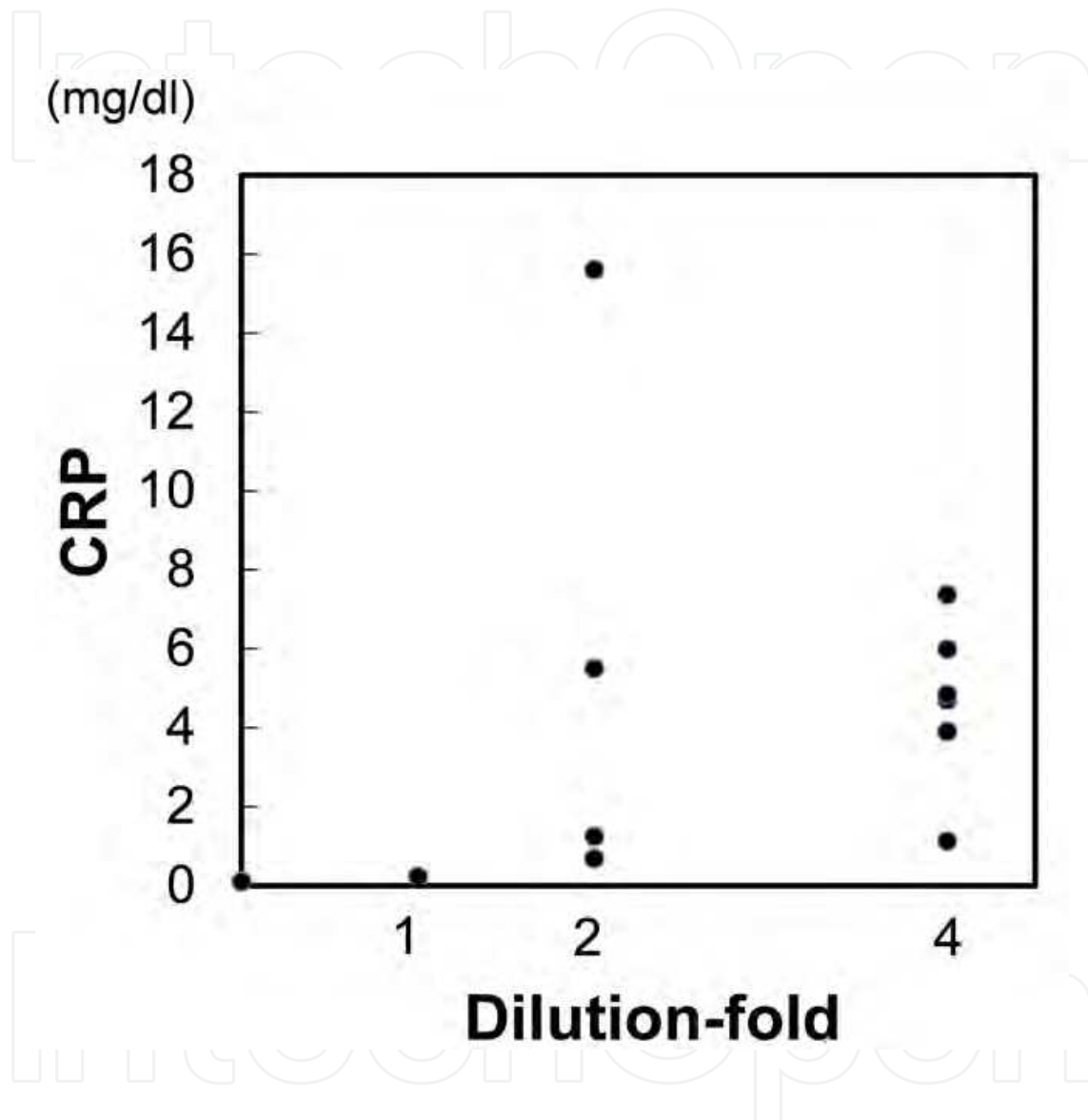


The vertical axis indicates the highest dilution-fold of sample that was positive for gelatinase activity. A value of zero indicates negative gelatinase activity. While only 3 of 15 (20%) samples from OA patients exhibited gelatinase activity, activity was detected in 24 of 28 (86%) samples from RA patients. Gelatinase activity was detected in two samples from RA patients diluted 1:8.

Fig. 5. Gelatinase activity of synovial fluid from OA and RA patients.

4. Correlation between gelatinase activity and biological marker

The concentration of proteases in serum and synovial fluid often correlates with that of biological markers. For example, MMP-3 levels significantly correlate with those of C-reactive protein (CRP) (Posthumus et al., 2003; Wassilew et al., 2010). On comparison of gelatinase activity with biological markers, it was demonstrated that samples with high gelatinase activity tended to have high CRP levels (Fig. 6).



The horizontal axis represents the highest dilution-fold of synovial fluid sample that was positive for gelatinase activity from RA patients. The vertical axis indicates the CRP level.

Fig. 6. Correlation between gelatinase activity and CRP levels.

5. Conclusions

The protease MMP-3, which degrades several ECM proteins and activates a number of MMPs, is often a useful predictor of joint destruction (Mamehara et al., 2010; Yamanaka et al., 2000). However, other proteases present in synovial fluid are also involved in cartilage destruction and warrant measurement. Our method using gelatin coated-film allows the comprehensive assay of gelatinase activity, including MMP-3 and other proteases, and is thought to accurately reflect the pathological condition of RA and OA and serve as a useful tool for the prediction of joint destruction. Notably, the observed gelatinase activities of the synovial fluid from RA and OA patients assayed by this method were consistent with a previous report. Gelatinase activity measured by this method also correlated with CRP levels.

The benefits of this assay method include the capability to measure comprehensive enzyme activity and simplicity, as special instruments are not required. Despite these advantages, the detection sensitivity of the proposed method is not sufficient to detect the enzyme activities of many OA samples. Improvement of the detection sensitivity is the most important issue to address, and will provide detailed information about the gelatinase activity in synovial fluid and more closely reflect clinical conditions.

The developed assay method is expected to be a useful tool for predicting the effect of therapy for not only RA, but also OA.

6. Abbreviations

The abbreviations used are: RA, rheumatoid arthritis; OA, osteoarthritis; ECM, extracellular matrix; MMP, matrix metalloproteinase; ADAMTS, a disintegrin-like and metalloproteinase with thrombospondin type 1 motif; FIZ, film in situ zymography; APMA, p-Aminophenylmercuric acetate; CRP, C-reactive protein.

7. References

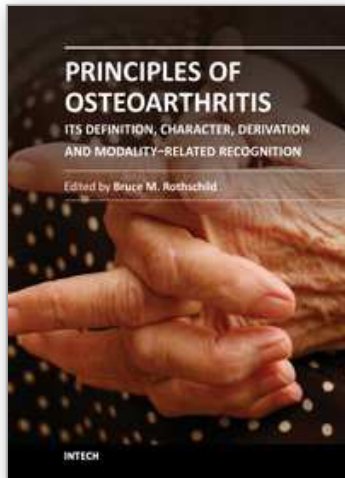
- Arner EC. (2002). Aggrecanase-mediated cartilage degradation. *Curr Opin Pharmacol*. Vol. 2, No. 3, (Jun 2002) pp. 322-9. ISSN: 1471-4892
- Chakraborti S, Mandal M, Das S, Mandal A, Chakraborti T. (2003). Regulation of matrix metalloproteinases: an overview. *Mol Cell Biochem*, Vol. 253, No. 1-2, (Nov 2003) pp. 269-85. ISSN: 0300-8177
- Gendron C, Kashiwagi M, Lim NH, Enghild JJ, Thøgersen IB, Hughes C, Caterson B, Nagase H. (2007). Proteolytic activities of human ADAMTS-5: comparative studies with ADAMTS-4. *J Biol Chem*, Vol. 282, No. 25, (Jun 2007) pp. 18294-306. ISSN: 0021-9258
- Huang K, Wu LD. (2008). Aggrecanase and aggrecan degradation in osteoarthritis: a review. *J Int Med Res*. Vol. 36, No. 6, (Nov-Dec 2008) pp. 1149-60. ISSN: 0300-0605
- Lauer-Fields JL, Minond D, Sritharan T, Kashiwagi M, Nagase H, Fields GB. (2007). Substrate conformation modulates aggrecanase (ADAMTS-4) affinity and

- sequence specificity. Suggestion of a common topological specificity for functionally diverse proteases. *J Biol Chem*, Vol. 282, No. 1, (Jan 2007) pp. 142-50. ISSN: 0021-9258
- Mahmoud RK, El-Ansary AK, El-Eishi HH, Kamal HM, El-Saeed NH. (2005). Matrix metalloproteinases MMP-3 and MMP-1 levels in sera and synovial fluids in patients with rheumatoid arthritis and osteoarthritis. *Ital J Biochem*, Vol. 54, No. 3-4, (Sep-Dec 2005) pp. 248-57, ISSN: 0021-2938
- Mamehara A, Sugimoto T, Sugiyama D, Morinobu S, Tsuji G, Kawano S, Morinobu A, Kumagai S. (2010). Serum matrix metalloproteinase-3 as predictor of joint destruction in rheumatoid arthritis, treated with non-biological disease modifying anti-rheumatic drugs. *Kobe J Med Sci*, Vol. 56, No. 3, (Sep 2010) pp. E98-107. ISSN: 0023-2513
- Murphy G, Nagase H. (2008). Reappraising metalloproteinases in rheumatoid arthritis and osteoarthritis: destruction or repair? *Nat Clin Pract Rheumatol*, Vol. 4, No. 3, (Mar 2008) pp. 128-35. ISSN: 1745-8382
- Nagase H, Enghild JJ, Suzuki K, Salvesen G. (1990). Stepwise activation mechanisms of the precursor of matrix metalloproteinase 3 (stromelysin) by proteinases and (4-aminophenyl) mercuric acetate. *Biochemistry*, Vol. 29, No. 24 (Jun 1990) pp. 5783-9. ISSN: 0006-2960
- Nagase H, Suzuki K, Enghild JJ, Salvesen G. (1991). Stepwise activation mechanisms of the precursors of matrix metalloproteinases 1 (tissue collagenase) and 3 (stromelysin). *Biomed Biochim Acta*, Vol. 50, No. 4-6, (1991) pp. 749-54. ISSN: 0232-766X
- Posthumus MD, Limburg PC, Westra J, van Leeuwen MA, van Rijswijk MH. (2003). Serum matrix metalloproteinase 3 levels in comparison to C-reactive protein in periods with and without progression of radiological damage in patients with early rheumatoid arthritis. *Clin Exp Rheumatol*, Vol. 21, No. 4, (Jul-Aug 2003) pp. 465-72, ISSN: 0392-856X
- Sun HB. (2010). Mechanical loading, cartilage degradation, and arthritis. *Ann N Y Acad Sci*, Vol. 1211, (Nov 2010) pp. 37-50. ISSN: 0077-8923
- Wassilew GI, Lehnigk U, Duda GN, Taylor WR, Matziolis G, Dinybil C. (2010). The expression of proinflammatory cytokines and matrix metalloproteinases in the synovial membranes of patients with osteoarthritis compared with traumatic knee disorders. *Arthroscopy*, Vol. 26, No. 8, (Aug 2010) pp. 1096-104. ISSN: 0749-8063
- Yamanaka H, Matsuda Y, Tanaka M, Sendo W, Nakajima H, Taniguchi A, Kamatani N. (2000). Serum matrix metalloproteinase 3 as a predictor of the degree of joint destruction during the six months after measurement, in patients with early rheumatoid arthritis. *Arthritis Rheum*, Vol. 43, No. 4, (Apr 2000) pp. 852-8, ISSN: 0004-3591
- Yan SJ, Blomme EA. (2003). In situ zymography: a molecular pathology technique to localize endogenous protease activity in tissue sections. *Vet Pathol*, Vol. 40, No. 3 (May 2003) pp. 227-36. ISSN: 0300-9858

Yoshida W, Uzuki M, Nishida J, Shimamura T, Sawai T. (2009). Examination of in vivo gelatinolytic activity in rheumatoid arthritis synovial tissue using newly developed in situ zymography and image analyzer. *Clin Exp Rheumatol*, Vol. 27, No. 4, (Jul-Aug 2009) pp. 587-93. ISSN: 0392-856X

IntechOpen

IntechOpen



Principles of Osteoarthritis- Its Definition, Character, Derivation and Modality-Related Recognition

Edited by Dr. Bruce M. Rothschild

ISBN 978-953-51-0063-8

Hard cover, 590 pages

Publisher InTech

Published online 22, February, 2012

Published in print edition February, 2012

This volume addresses the nature of the most common form of arthritis in humans. If osteoarthritis is inevitable (only premature death prevents all of us from being afflicted), it seems essential to facilitate its recognition, prevention, options, and indications for treatment. Progress in understanding this disease has occurred with recognition that it is not simply a degenerative joint disease. Causative factors, such as joint malalignment, ligamentous abnormalities, overuse, and biomechanical and metabolic factors have been recognized as amenable to intervention; genetic factors, less so; with metabolic diseases, intermediate. Its diagnosis is based on recognition of overgrowth of bone at joint margins. This contrasts with overgrowth of bone at vertebral margins, which is not a symptomatic phenomenon and has been renamed spondylosis deformans. Osteoarthritis describes an abnormality of joints, but the severity does not necessarily produce pain. The patient and his/her symptoms need to be treated, not the x-ray.

How to reference

In order to correctly reference this scholarly work, feel free to copy and paste the following:

Akihisa Kamataki, Wataru Yoshida, Mutsuko Ishida, Kenya Murakami, Kensuke Ochi and Takashi Sawai (2012). Simple Method Using Gelatin-Coated Film for Comprehensively Assaying Gelatinase Activity in Synovial Fluid, Principles of Osteoarthritis- Its Definition, Character, Derivation and Modality-Related Recognition, Dr. Bruce M. Rothschild (Ed.), ISBN: 978-953-51-0063-8, InTech, Available from: <http://www.intechopen.com/books/principles-of-osteoarthritis-its-definition-character-derivation-and-modality-related-recognition/simple-method-using-gelatin-coated-film-for-comprehensively-assaying-gelatinase-activity-in-synovial>

INTECH
open science | open minds

InTech Europe

University Campus STeP Ri
Slavka Krautzeka 83/A
51000 Rijeka, Croatia
Phone: +385 (51) 770 447
Fax: +385 (51) 686 166
www.intechopen.com

InTech China

Unit 405, Office Block, Hotel Equatorial Shanghai
No.65, Yan An Road (West), Shanghai, 200040, China
中国上海市延安西路65号上海国际贵都大饭店办公楼405单元
Phone: +86-21-62489820
Fax: +86-21-62489821

© 2012 The Author(s). Licensee IntechOpen. This is an open access article distributed under the terms of the [Creative Commons Attribution 3.0 License](#), which permits unrestricted use, distribution, and reproduction in any medium, provided the original work is properly cited.

IntechOpen

IntechOpen