

We are IntechOpen, the world's leading publisher of Open Access books Built by scientists, for scientists

5,300

Open access books available

129,000

International authors and editors

155M

Downloads

Our authors are among the

154

Countries delivered to

TOP 1%

most cited scientists

12.2%

Contributors from top 500 universities



WEB OF SCIENCE™

Selection of our books indexed in the Book Citation Index
in Web of Science™ Core Collection (BKCI)

Interested in publishing with us?
Contact book.department@intechopen.com

Numbers displayed above are based on latest data collected.
For more information visit www.intechopen.com



Network of Gut Pacemaker Cells: Spatio-Temporal Evaluation of Electrical Activity by Use of Microelectrode Array

Shinsuke Nakayama, Mizuki Taniguchi and Hong-Nian Liu
*Nagoya University Graduate School of Medicine,
Japan*

1. Introduction

The word 'pacemaker' prompts us to imagine 'heart beats' and also an 'electric cardiogram'. However, spontaneous electrical activity occurs in numerous tissues and organs in the autonomic nervous system, such as in the gastrointestinal and urinary tracts, trachea, uterus, lymph ducts, etc. (Takaki et al, 2010). Recent studies have revealed that special interstitial cells in these tissues and organs act as pacemaker cells. In particular, in the gastrointestinal tract, pacemaker cells surround the myenteric plexus between the circular and longitudinal muscle layers. Since these cells express abundant tyrosine kinase, Kit receptors, on the surface, Kit-immunoreactivity and *kit* cDNA are used as markers for special pacemaker cells. Moreover, these cells are now referred to as interstitial cells of Cajal (ICC) due to their histological features of the network (Maeda et al. 1992; Faussone-Pellegrini and Thuneberg, 1999; Sanders et al. 1999; Rumessen and Vandervinden, 2003; Takaki, 2003).

It is widely accepted that peristaltic movement of the gastrointestinal tract is organized by a network of enteric neurons in the myenteric plexus: Ascending contraction and descending relaxation simultaneously occur to forward luminal contents. It is hypothesized that ICC may also make an essential contribution to the co-ordinated actions of gastrointestinal motility through their network (Nakayama et al. 2006; 2009, see also Fig. 7).

There are an increasing number of papers that report the impairment of ICC in GI motility disorders, for example, in inflammatory bowel diseases (IBD) (Suzuki et al. 2004; Wang et al. 2002; 2007; Kinoshita et al. 2007), diabetic gastroparesis (Camilleri, 2002; Ordög et al. 2000; Vittal et al. 2007), slow transit constipation (He et al. 2000; Lyford et al. 2002; Wedel et al. 2002), Hirschsprung's disease (Vanderwinden et al. 1996), etc. In these studies, the impairment of ICC has been evaluated in histological terms, such as apoptotic changes and reduction of ICC number. However, in some stage of these diseases, GI motility disorders may be caused by functional impairment of ICC preceded by or not linked with histological changes. Therefore, tools for evaluating ICC spatio-temporal activity are now anticipated.

We have thus employed a microelectrode array (MEA) in order to study ICC pacemaker activity. In this chapter, we describe our methods of MEA measurements and provide evidence showing that ICC play crucial roles in propagating electrical activity as well as in pacemaking. In some experiments, we compare ileal muscle preparations of wild-type (WT)

and W/W^v mice as a model to evaluate the impairment of ICC, because it is well known that the latter has a largely reduced population of ICC in the myenteric region due to partial loss-of-function mutation of Kit receptors (Reith, 1990; Ward et al. 2004; Iino et al. 2007).

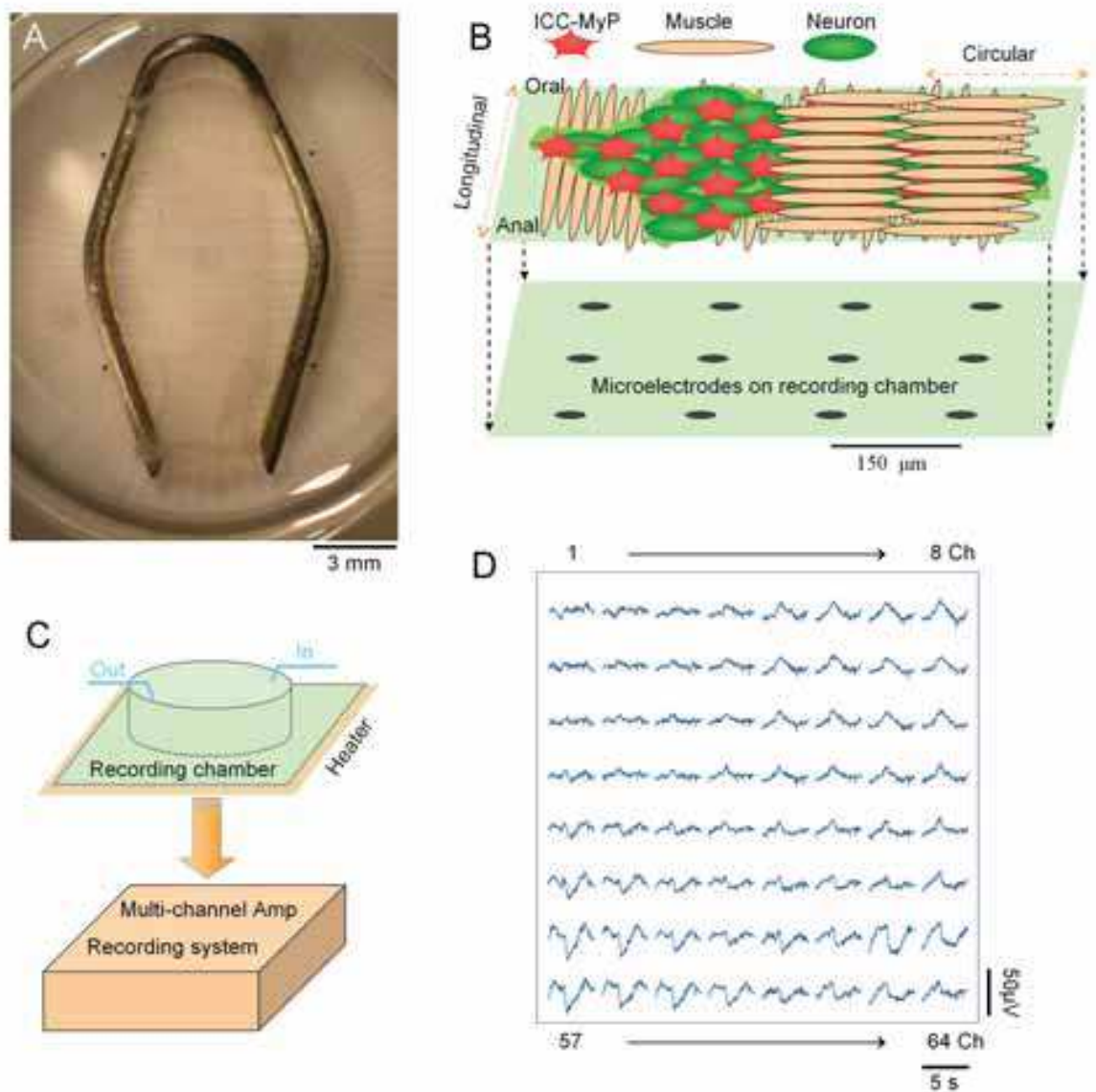


Fig. 1. MEA system to measure gut pacemaker electrical activity (modified from Fig. 1, Nakayama et al. 2009). As an example, an MEA recording from ileal musculature is shown. It is known that network-forming ICC in the myenteric plexus (ICC-MyP) generate pacemaker potentials in the ileum.

2. Microelectrode array measurements

In order to analyze spatio-temporal properties of gut pacemaker cells, we employed an MEA system (Nakayama et al. 2006; 2009), which was previously used for brain slice and explant preparations (Shimono *et al.* 2000; Nakamura *et al.* 2002). Musculature preparations

isolated from animals were mounted in a recording chamber with an 8 x 8 planar MEA (Fig. 1). The chamber was kept warm and continuously perfused with physiological solutions. Gut pacemaker electrical activity was recorded at 64 channels simultaneously.

2.1 Animals

The animals used were treated in accordance with the Animal Experimental Guides of Nagoya University Graduate School of Medicine. Guinea-pigs, and WT (BALB/c) and *W/W^v* mice were used. The gastrointestinal tract was quickly excised. The mucosa was removed with fine scissors in the stomach, and with fine forceps in the ileum. Small segments of the whole-muscle layer containing the myenteric plexus were dissected and mounted in a recording chamber. The musculature preparations were held down under the strings of a slice anchor (SDH series, Harvard Apparatus Japan, Tokyo, Japan), and were superfused with modified Krebs solution (normal extracellular solution) at a constant rate of 2 ml/min, and placed on a heater kept at 35°C.

2.2 Electrical recordings

In this MEA system 8 x 8 planar electrodes (150 or 300 μm in polar distance) were connected to a 64-channel amplifier (MED 64 System, Alpha Med Science, Osaka, Japan). Electrical potentials at 64 channels were recorded simultaneously at a sampling rate of 20 kHz, after low-pass filtering at 10 kHz. Also, a high-pass filter (HPF) of 0.1 Hz was applied to stabilise the baseline drift of the DC potential (Brock & Cunnane, 1987). The low impedance of microelectrodes (<10 k Ω , at 1 kHz) and a HPF of 0.1 Hz enabled us to follow slow electrical oscillations of gut pacemaker activity (Nakayama et al. 2006; 2009).

2.3 Solutions and drugs

The composition of the “normal” extracellular solution, a modified Krebs solution, was (in mmol/L): NaCl, 125; KCl, 5.9; MgCl₂ 1.2; CaCl₂ 2.4; glucose 11; Tris-HEPES, 11.8 (pH 7.4). Nifedipine and tetrodotoxin (TTX) were purchased from Sigma (St Louis, MO, USA).

Gut musculature preparations contain three major cell types which generate electrical activity: smooth muscle cells, neurons and ICC. It is well known that TTX suppresses neural activity by blocking voltage-gated Na⁺ channels. In gut smooth muscle, contractility and excitability largely depend on Ca²⁺-influx via L-type voltage-gated Ca²⁺ channels. Dihydropyridine (DHP) Ca²⁺ antagonists e.g. nifedipine and nicardipine, which selectively block L-type Ca²⁺ channels, nearly completely suppress spontaneous contractile and electrical activities in gut smooth muscle (Nakayama et al. 2007). On the other hand, ICC pacemaking also requires extracellular Ca²⁺, but DHP Ca²⁺ antagonists have little effect on ICC electrical activity (Dickens et al. 1999; Huang et al. 1999), probably because L-type Ca²⁺ channels are not major Ca²⁺ influx pathways in ICC.

In MEA measurements of gut pacemaker activity, the extracellular solution contained nifedipine (1 $\mu\text{mol/L}$) in order to suppress smooth muscle electrical activity, and to reduce electrical artefacts due to muscle contractions. In addition, the extracellular solution always contained TTX (500 nmol/L) in order to rule out electrical signals from enteric neurons and neural modulation of ICC activity (linked with neurotransmitter release by action potentials in neurons). MEA measurements started ~30 min after superfusing with the extracellular solution containing nifedipine and TTX.

2.4 Data analysis

Arrayed data of field potentials were normally thinned by a 1000-fold time domain, thereby the sampling interval was increased to 50 ms. This sampling frequency was enough to follow gut pacemaking electrical activity. Cross-correlation, power spectrum, and digital filtering of spontaneous electrical potentials were performed using commercial add-in software (Kyowa Electronic Instruments, Tokyo, Japan). Two-dimensional field potential images were constructed by calculating values at the desired location via spline interpolation, using the MATLAB software package (Mathworks: Natick, MA, USA) (Shimono et al. 2000; Nakayama et al. 2009).

Numerical data are expressed as means±S.D. Significant differences were evaluated by unpaired t-tests.

3. Gut pacemaker activity

3.1 Stomach ICC activity

The stomach is divided into the fundus, corpus, antrum and pylorus. Typical pacemaker potentials are relatively easily observed in the gastric antrum of guinea-pigs, therefore we used musculature preparations in this part of the stomach. It is known that network-forming ICC in the myenteric plexus (ICC-MyP) of the antral muscle act as primary pacemaker cells, while intramuscular ICC (ICC-IM) in the circular muscle amplify the pacemaker electrical activity (Dickens et al. 1999; Hirst & Ward, 2003).

Musculature preparations were placed with the circular muscle layer down, and fixed in a recording chamber with an array of 8 x 8 MEA with 300 µm in interpolar distance. The recording area was ~4mm². Figure 2 shows an example of field potential recordings in the guinea-pig stomach, by use of the MEA. In Aa, a muscle preparation was under superfusion with a "normal" (modified Krebs) extracellular solution. The upper and lower ends correspond to the anal and oral ends of the gastric antrum, respectively, while the left and right correspond to the lesser and greater curvature ends. This set of MEA recordings is plotted with the same scale of amplitude, indicating the existence of a gradient in the field potential amplitude.

In Fig. 2B, the amplitude (y-axis) of MEA recording was expanded to more clearly display spontaneous electrical activity recorded in each planar electrode, indicating that the occurrence of spontaneous electrical activity was well synchronised over the electrode array area. Essentially, the synchronicity of electrical activities was similar in all antral muscle preparations tested.

As described in Section 2.3, DHP Ca²⁺ channel antagonists can be used to isolate ICC pacemaker electrical activity by suppressing smooth muscle contractility and excitability. As shown in Fig. 2Ab, nifedipine, a DHP Ca²⁺ antagonist had little effect on the frequency of spontaneous electrical activity, and also did not significantly alter the shape of the field potential in the majority of recording channels. Also, additional application of TTX had little or no further effect on these field potential recordings (Fig. 2Ac). These results indicated that ICC make a predominant contribution to the generation of spontaneous electric activity in the stomach musculature.

The shape of the spontaneous electrical activity (≈ ICC pacemaker activity) in the stomach musculature varied greatly, but usually consisted of an initial, fast negative potential (red arrow in Fig. 2D) followed by a slowly decaying component (green double arrow).

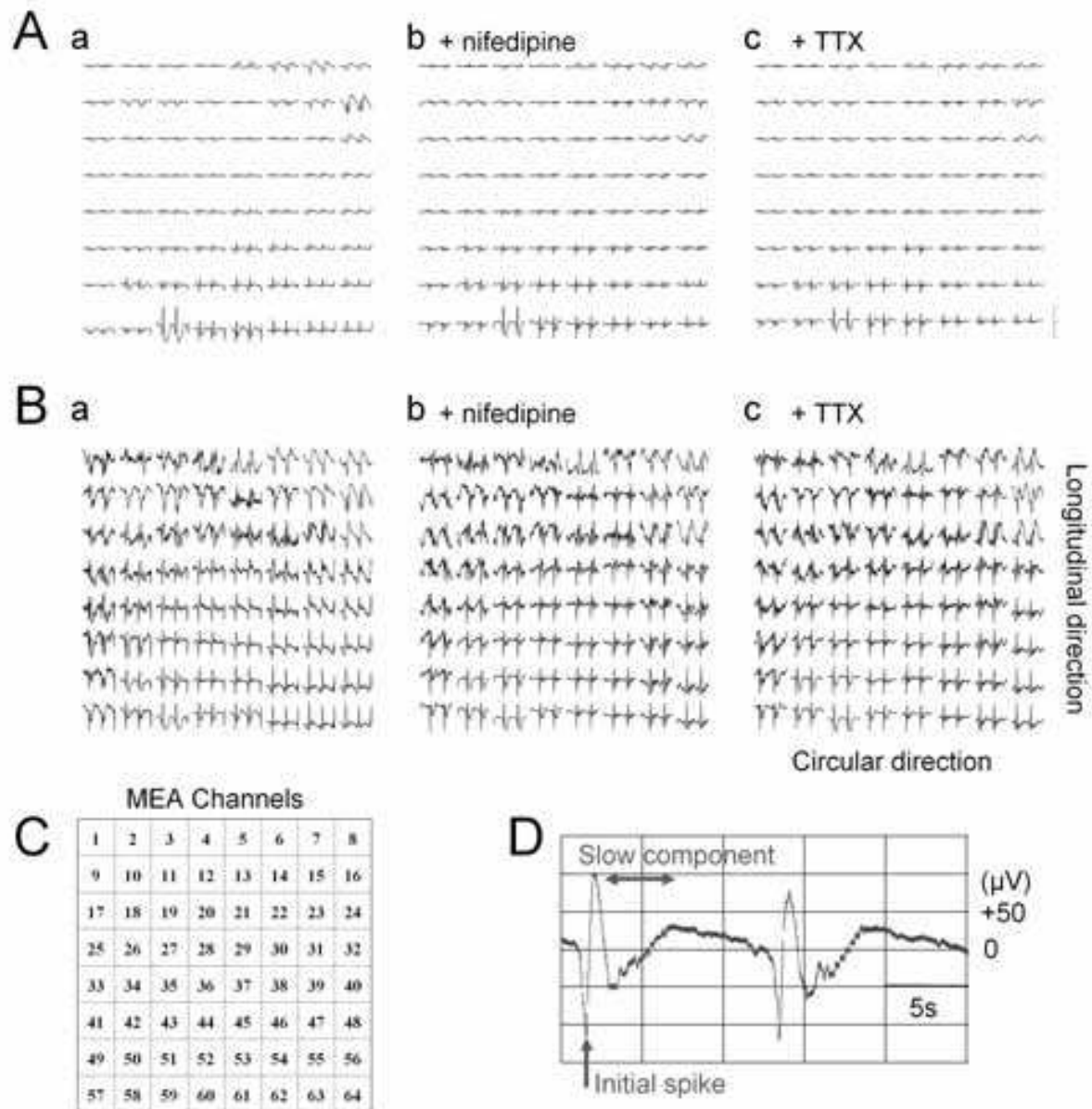


Fig. 2. An example of the distribution of spontaneous electrical activities in a stomach muscle preparation recorded using an 8 x 8 MEA with a polar distance of 300 μm (Modified from Figs. 1 and 3, Nakayama et al. 2006). Each trace in A shows the normalised field potential with a y-range of $\pm 150 \mu\text{V}$ (scale bar). In B, the y-range was adjusted to more clearly show the shape of spontaneous electrical activity at each recording channel. The channel number of the arrayed electrodes is shown in C. Panel D shows an expanded typical pacemaker activity with initial spike followed by a slow component.

3.2 Reversible propagation

ICC pacemaker field potentials were well synchronized over the recording area; however, phase differences were clearly observed between some of the recording channels. Figure 3A shows an example in which the pacemaker potentials propagate from the oral to anal end. The field potential traces (a-c) were recorded in Ch. 25, 27, and 29, respectively. The initial

spike (down-stroke) in trace (a) was followed by those in (b) and (c). The field potential images (d) show excitation (yellow area) running from the right to the left, indicating the oral to anal propagation.

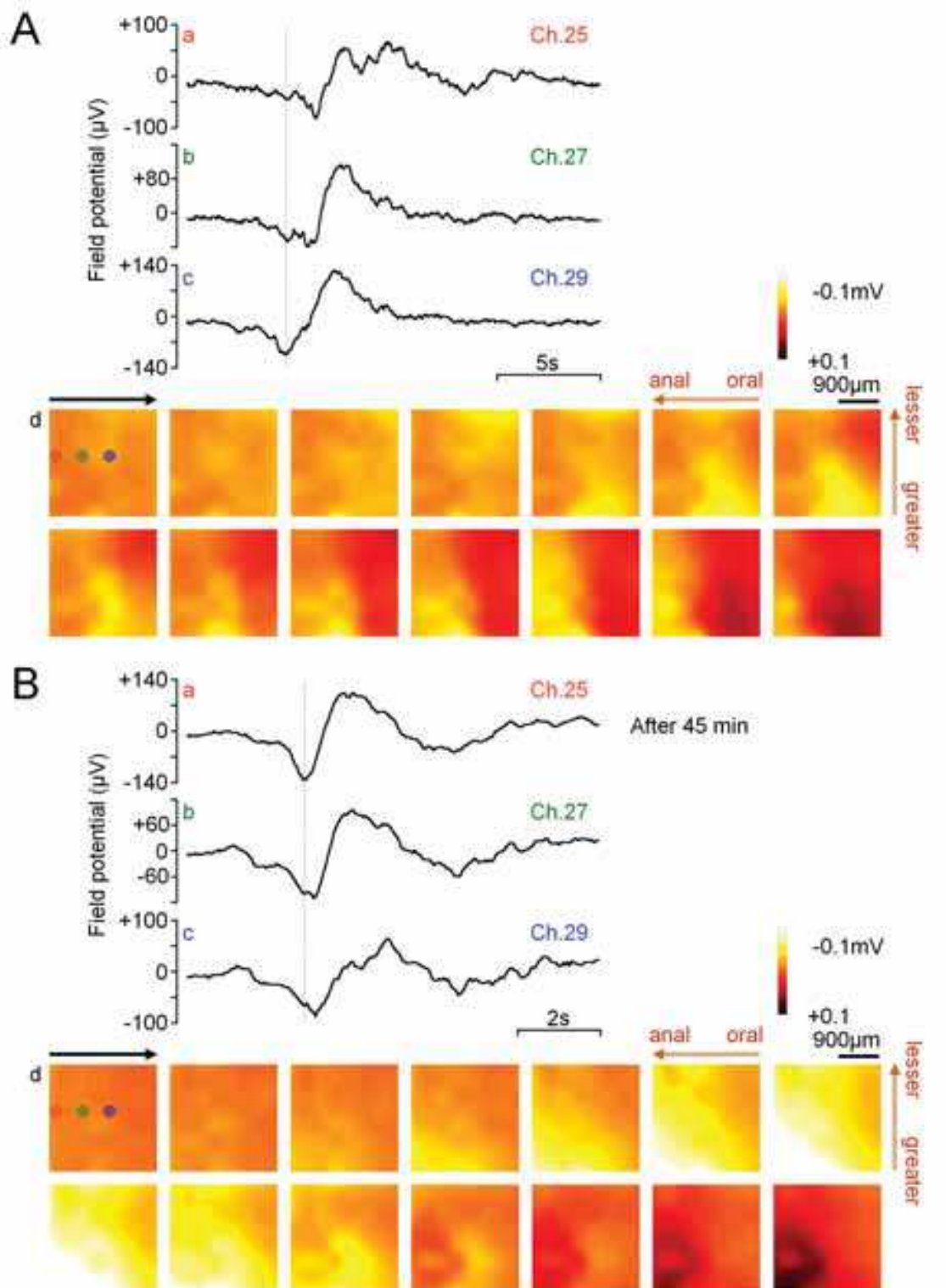


Fig. 3. An example of reversed ICC pacemaker activity (Modified from Fig. 8, Nakayama et al. 2006).

The field potential traces and images in Fig. 3B were obtained from the same gastric antrum preparation used in A, after approximately 45 min. This preparation was continuously superfused with the same extracellular solution (containing nifedipine). The field potential traces and images clearly show reversed electrical excitation, running from the anal to the oral end.

A phase shift proceeding from the oral end was observed in the majority (15 out of 18) of the stomach preparations. The propagation velocity of the spontaneous electrical activity along the longitudinal muscle ranged from -14.25 to $+13.27$ mm s⁻¹, but it was around ~ 1 (or -1) mm s⁻¹ in the majority (13 out of 18) of preparations (plus indicates the oral to anal propagation). In 10 antral muscle preparations with the pacemaker phase shift proceeding from the oral end in the initial observation, field potentials were continuously recorded for ~ 30 min. The direction of propagation was reversed in four out of 10 preparations (Nakayama et al. 2006). Altogether, these results indicate that coupling of ICC pacemaker activity has plasticity and that an ICC network can even produce reversible propagation of pacemaker potentials in the stomach.

3.3 Ileal ICC activity in wild-type and W/W^v mice

Musculature preparations isolated from the mouse ileum were placed with the longitudinal muscle layer down on an 8 x 8 MEA with a polar distance of 150 μ m. The recording area was ~ 1 mm². Ileal musculature preparations contained both circular and longitudinal muscle layers and the myenteric plexus between these muscle layers. In order to suppress smooth muscle and neural activities, the extracellular solution contained nifedipine and TTX, respectively.

In the WT mouse ileum, network-forming ICC-MyP predominantly contribute to the generation of pacemaker potentials. W/W^v mice are known to lack or largely reduce pacemaking ICC-MY in the ileum (Reith, 1990; Ward et al. 1994; Iino et al. 2007). Therefore in the presence of nifedipine and TTX, only little spontaneous electrical activity was anticipated in ileal preparations from W/W^v mice. Figure 4 shows such the difference between WT and W/W^v mice. In WT mice spontaneous electrical potentials occurred regularly, while in W/W^v mice electrical activity was significantly smaller in amplitude and irregular in occurrence.

Power spectra over the recording area (Fig. 5A and B) were constructed from field potentials of all 64 channels for approximately 40 s recorded from the same preparations shown in Fig. 4. The power spectrum of WT mice had a prominent peak corresponding to the frequency of ileal ICC electrical activity, but that of W/W^v mice did not, reflecting an irregular occurrence of small electrical activities. Essentially the same tendencies were observed in other WT ($n=28$) and in W/W^v ($n=27$) ileal musculature preparations. In all preparations of WT mice, the spectral peak was normally observed between 9.4-27.0 cpm, thereby, the ratio of spectral power in this frequency range ($Pw_{9.4-27.0\text{cpm}}$) was significantly greater in WT mice ($74.8\pm 15.9\%$, $n=29$) than in W/W^v mice ($38.0\pm 15.6\%$, $n=28$) ($P<0.0001$, Fig. 5C).

3.4 Spatio-temporal analysis

Pacemaker potential images were constructed from field potentials measured by MEA. Panels in Fig. 6A show a sequence of field potential images obtained from the same WT mouse ileum preparation in Fig. 4. The top and bottom of each image correspond to the oral and anal ends of the MEA recording region, respectively. In this preparation, initial

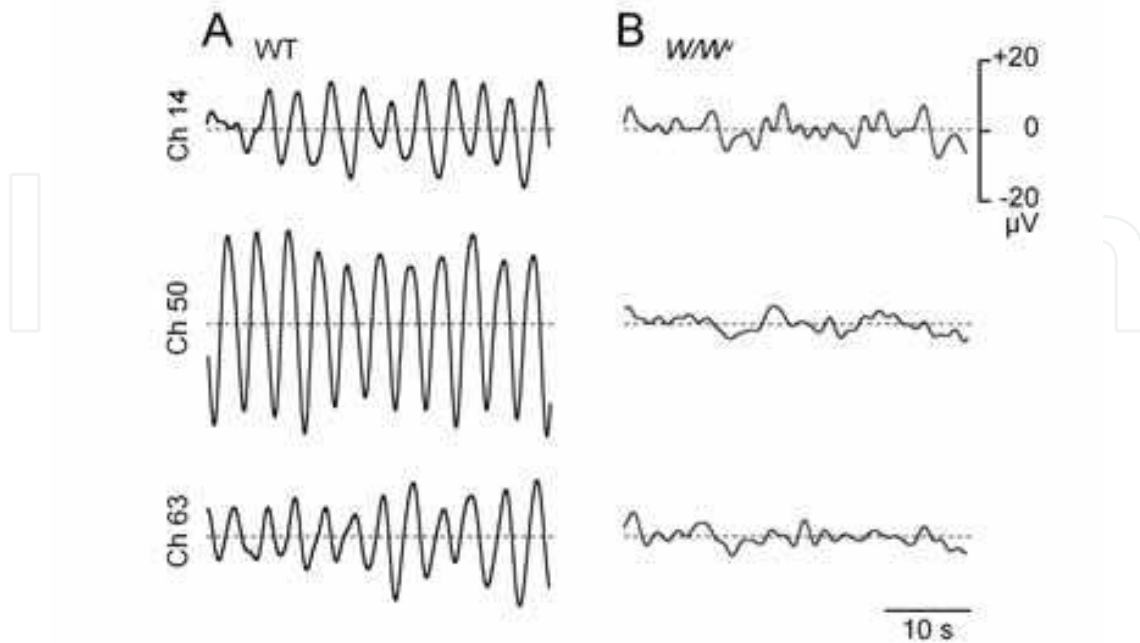


Fig. 4. Examples of field potentials recorded from ileal muscle preparations of WT (A) and WW^v mice (B) (Reproduced from Fig. 2, Nakayama et al. 2009). Field potentials were plotted after digital band-pass filtering at 0.05-0.5 Hz.

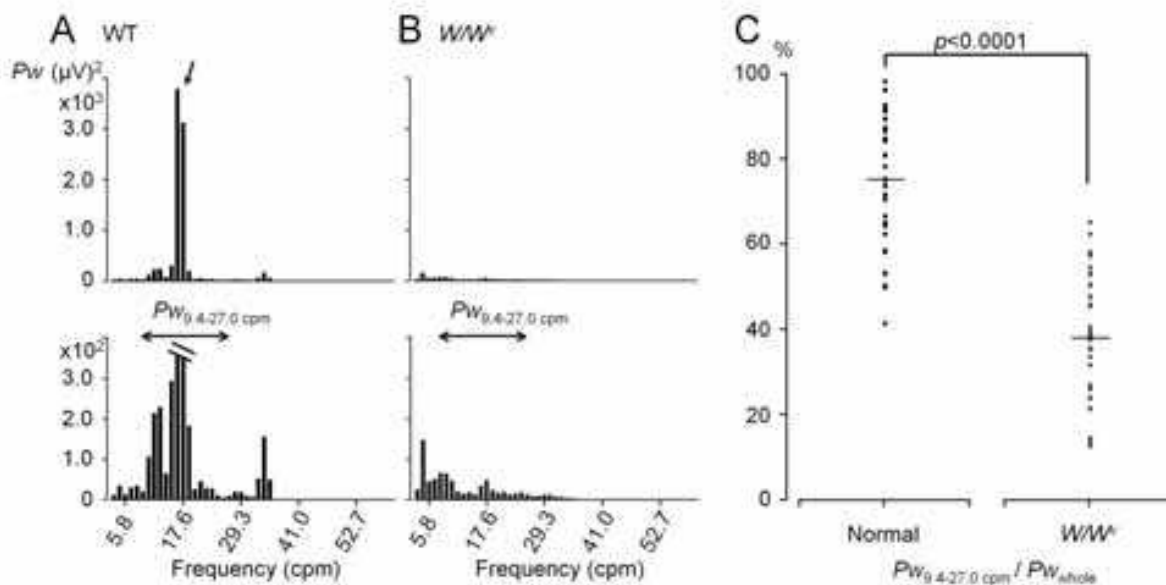


Fig. 5. Power spectrum analysis (Reproduced from Fig. 3, Nakayama et al. 2009). A-B: Field potential recordings from the same preparations shown in Fig. 4 were used. C: Summary of power spectra in WT ($n=29$) and WW^v mice ($n=28$). The ratio of the spectral power (Pw) between 9.4-27.0 cpm to the whole Pw is plotted. Horizontal lines represent mean values.

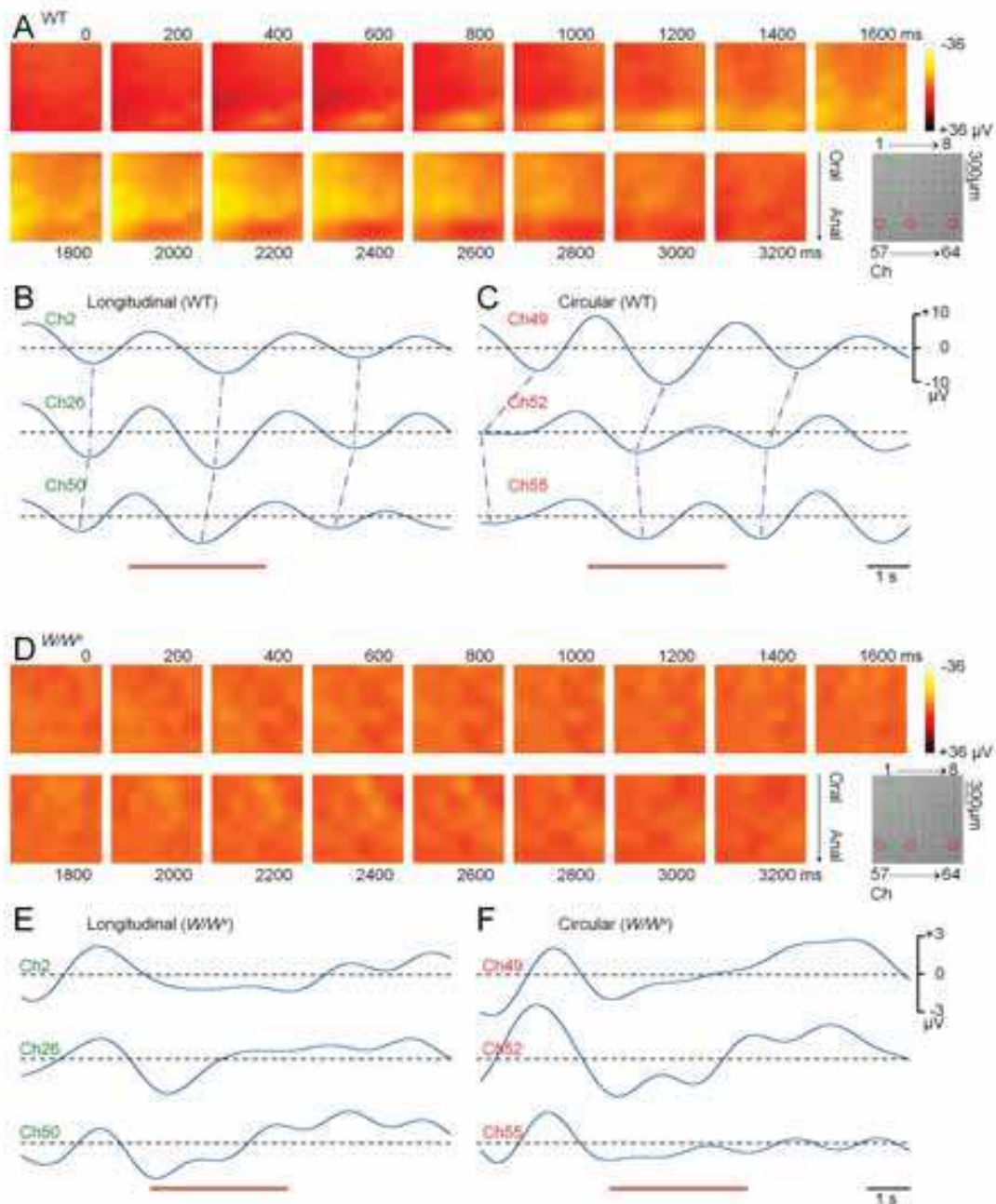


Fig. 6. Spatio-temporal analysis of pacemaker electrical activity in the ileum isolated from WT wild-type (A-C) and WW^v mice (D-F) (Reproduced from Fig. 4, Nakayama et al. 2009). The peaks of electric excitation (down-stroke corresponding to depolarization) are connected by blue dotted lines. The red horizontal lines indicate the period of the potential images acquired. excitation occurred in the right bottom of MEA near Ch62. Next, the excitation propagated along the circular muscle toward both ends, and then propagated along the longitudinal muscle toward the oral end. Field potential traces in Figs 6B and C show three cycles of spontaneous electrical oscillations recorded in Ch2, 26, and 50 (lined along longitudinal muscle), and Ch49, 52, and 55 (lined along circular muscle), respectively. As shown in Fig. 6A-C, in 29 preparations in WT mice, electrical activities were synchronised, and the propagation velocity of the excitation was $\sim 1.4 \text{ mm s}^{-1}$ in both directions. The propagating velocity was, however, changeable.

The sequence of potential images in Fig. 6D and field potential traces in Figs. 6E and F were obtained by applying the same procedures used in Figs. 6A-C, respectively, to the same ileal musculature preparation of W/W^v mice shown in Fig 4. In W/W^v mice, spontaneous electrical activities were smaller in amplitude, were fluctuating, and were not well-synchronized over the recording area (Figs. 6E and F). Furthermore, there was no clear propagating direction observed. Essentially the same results were obtained from other ileal muscle preparations of WT and W/W^v mice.

4. Applications of MEA in gut pacemakers

The mechanisms underlying gut spontaneous electrical activity are becoming clearer. Conventional microelectrodes have elucidated that Kit-reactive interstitial cells in the myenteric plexus, i.e. ICC-MyP generate basal pacemaking electrical potentials (Dickens et al. 1999; Kito et al. 2005). Further, there is a growing body of evidence that Ca^{2+} mechanisms provide these cells with fundamental rhythmicity (Nakayama et al. 2007). Namely, intracellular Ca^{2+} release channels and Ca^{2+} -permeable channels in the plasmalemma co-ordinately produce ICC Ca^{2+} oscillations underlying the generation of pacemaker electrical activity (Aoyama et al. 2004; Liu et al. 2005a; b).

Since ICC-MyP are network-forming cells, the next step in the understanding of GI motility and in the treatment of GI dysmotility is how these interstitial cells communicate with each other, and how pacemaking electrical activity contributes to coordinated actions of GI motility, i.e. to digest, mix and transport luminal contents. Previously, conventional multiple electrodes have been applied to investigate coordination of motor activity in a rather large distance, e.g. antroduodenal coordination (Wang et al. 2005; Lammers et al. 2005).

Recently, our MEA study successfully demonstrated the propagation of pacemaker potentials generated by an ICC network in a small area ($\sim 4 \text{ mm}^2$) of the stomach musculature (Nakayama et al. 2006). It is likely that such a phase shift (propagation delay) of pacemaker activity even in a few hundred micrometers enables smooth GI motility. Namely, the contractions of small segments of the gut linked with a linear phase shift in distance would elaborately squeeze luminal contents in a certain direction.

Coupling of pacemaker activity is changeable (plasticity) in the gut. Further, the propagation direction of pacemaker activity is reversible (Fig. 3), in contrast to the enteric neural network. Using this network system, luminal contents stimulate primary afferent neurons, and subsequently co-activate ascending excitatory and descending inhibitory neurons of the myenteric plexus via interneurons, causing ascending contraction and descending relaxation simultaneously (Furness, 2006; Wood, 2006). It is hypothesized that chained reactions of this reflex (i.e. peristaltic reflex) transport luminal contents throughout the gastrointestinal tract. Presumably the ICC network which can produce reversible activity, cooperates with the neural network, resulting in complex gut motility to efficiently digest luminal contents.

MEA has also been applied to investigate spontaneous electrical activity between ileal musculature preparations from WT and W/W^v mice. This comparison provides a model to evaluate impairment of the ICC network, because it is well known that the latter has a largely reduced population of ICC-MyP due to a partial loss-of-function mutation of Kit receptors (Reith, 1990; Ward et al. 2004; Iino et al. 2007). Analyses with power spectrum and potential mapping successfully distinguished electrical properties of these musculature preparations, indicating that network-forming ICC-MyP not only generates pacemaker potentials but also co-ordinates basal electrical activities. Disorders of gut motility based on morphological and/or functional impairments of the ICC network with a range of several hundred micrometers could be uncovered in future extensive studies, including model

animals. As described earlier, there is a considerable body of evidence for the impairment of the ICC network in GI motility disorders. Furthermore, there is also a growing body of evidence that ICC-like interstitial cells are widely distributed outside the GI tract, for example in small vessels, the lymph duct, urinary tract, uterus, and also accessory organs of the GI tract (Huizinga, and Fausone-Pellegrini, 2005; Brading, and McCloskey, 2005; McCloskey et al. 2002; Harhun et al. 2005; Ciontea et al. 2005; Sun et al. 2006). MEA could also be a useful tool to evaluate a wide range of spontaneous rhythmicities and related dismotilities, e.g. unstable urinary bladder in geriatrics.

5. Conclusions

MEA has enabled spatio-temporal analysis of gut pacemaker activity in a small area. Network-forming ICC not only generates pacemaker potentials but also co-ordinates basal electrical activities. The propagation velocity of pacemaker potential (i.e. phase shift of ICC electrical activity) is changeable, and even reversible under certain conditions. It is likely that co-contribution of the ICC network and neural network organizes complex gut motility.

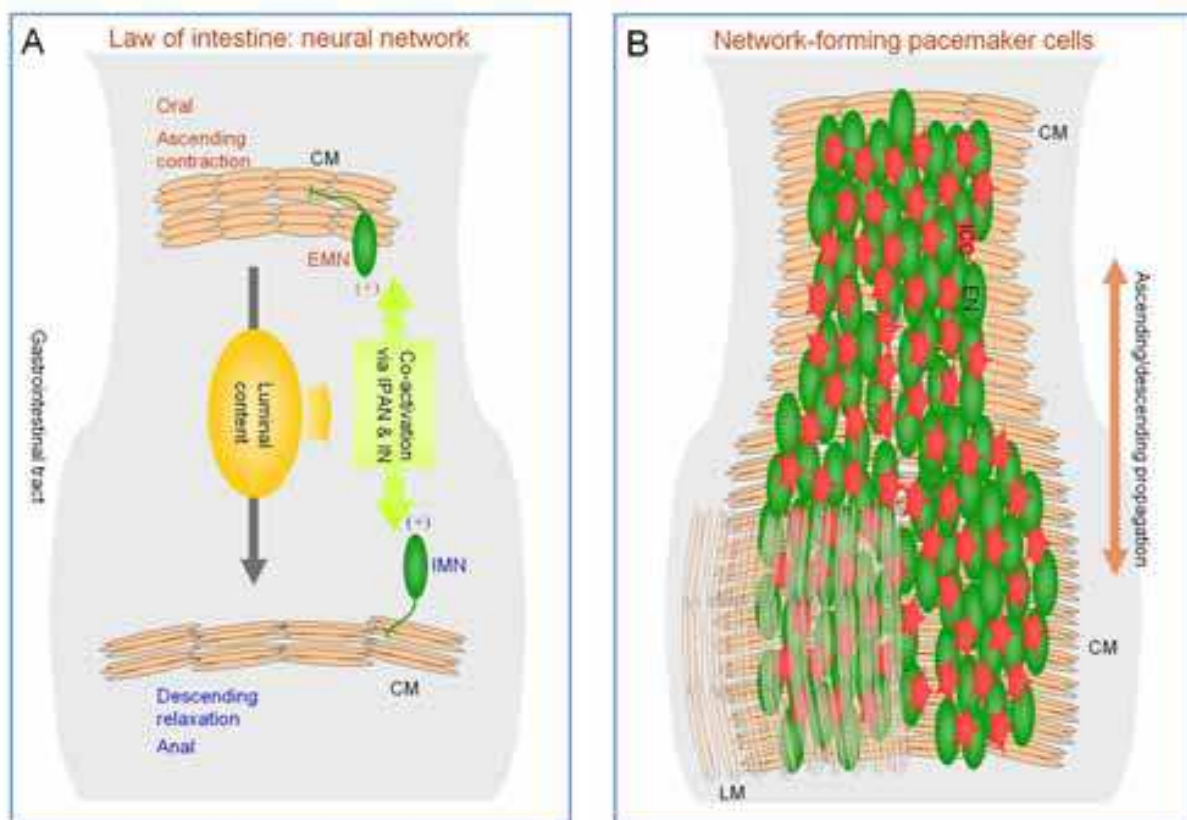


Fig. 7. Schematic diagrams of mechanisms underlying gut motility. A: Generally accepted 'law of intestine' is controlled by neural network. Luminal contents co-activate oral excitatory and anal inhibitory neurons (EMN and IMN) via intrinsic primary afferent neurons (IPAN) and interneurons (IN), thereby produce ascending contraction and descending relaxation simultaneously. B: A new contributor, 'network-forming pacemaker cells'. ICC-MyP surrounding the myenteric plexus between circular and longitudinal muscle layers (CM and LM), propagate as well as generate pacemaker activity. Propagation of pacemaker activity is changeable (plasticity), even reversed under some conditions. ICC network along with intrinsic neural network appears to elaborately control gut motility.

Future extensive studies using MEA will uncover disorders of gut motility based on morphological and/or functional impairments of the ICC network with the range of several hundred micrometers.

6. Acknowledgements

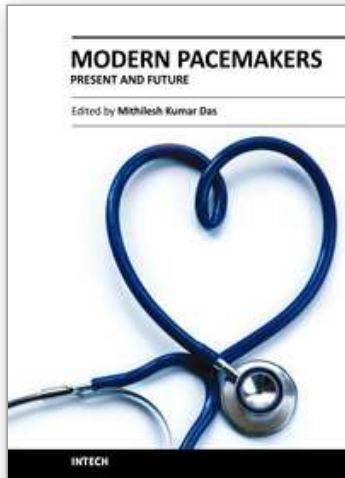
This work was partially supported by the Japan Society for the Promotion of Science and Takeda Science Foundation.

7. References

- Aoyama, M.; Yamada, A.; Wang, J.; Ohya, S.; Furuzono, S.; Goto, T.; Hotta, S.; Ito, Y.; Matsubara, T.; Shimokata, K.; Chen, S.R.W.; Imaizumi, Y. & Nakayama, S. (2004). Requirement of ryanodine receptors for pacemaker Ca^{2+} activity in ICC and HEK293 cells. *Journal of Cell Science* 117, 2813-2825
- Brading, A.F. & McCloskey, K.D. (2005). Mechanisms of disease: specialized interstitial cells of the urinary tract—an assessment of current knowledge. *Nature Clinical Practice Urology* 2, 546-554.
- Brock, J.A. & Cunnane, T.C. (1987). Relationship between the nerve action potential and transmitter release from sympathetic postganglionic nerve terminals. *Nature* 326, 605-607.
- Camilleri, M. (2002). Advances in diabetic gastroparesis. *Reviews in Gastroenterological Disorders* 2, 47-56.
- Ciontea, S.M.; Radu, E.; Regalia, T.; Ceafalan, L.; Cretoiu, D.; Gherghiceanu, M.; Braga, R.I.; Malincenco, M.; Zagrean, L.; Hinescu, M.E. & Popescu, L.M. (2005). C-kit immunopositive interstitial cells (Cajal-type) in human myometrium. *Journal of Cellular and Molecular Medicine* 9, 407-420.
- Dickens, E.J.; Hirst, G.D.S. & Tomita, T. (1999). Identification of rhythmically active cells in guinea-pig stomach. *Journal of Physiology (Lond.)* 514, 515-531.
- Faussone-Pellegrini, M.S. & Thuneberg, L. (1999). Guide to the identification of interstitial cells of Cajal. *Microscopy Research and Technology* 47, 248-66.
- Furness, J.B. (2006). The enteric nervous system. Blackwell Publishing, Oxford, pp.1-274.
- Harhun, M.I.; Pucovsky, V.; Povstyan, O.V.; Gordienko, D.V. & Bolton, T.B. (2005). Interstitial cells in the vasculature. *Journal of Cellular and Molecular Medicine* 9, 232-243.
- He, C.L.; Burgart, L.; Wang, L.; Pemberton, J.; Young-Fadok, T.; Szurszewski, J. & Farrugia, G. (2000). Decreased interstitial cell of cajal volume in patients with slow-transit constipation. *Gastroenterology* 118, 14-21.
- Hirst, G.D.S. & Ward, S.M. (2003). Interstitial cells: involvement in rhythmicity and neural control of gut smooth muscle. *Journal of Physiology (Lond.)* 550, 337-346.
- Huizinga, J.D. & Faussone-Pellegrini, M.S. (2005). About the presence of interstitial cells of Cajal outside the musculature of the gastrointestinal tract. *Journal of Cellular and Molecular Medicine* 9, 468-73.
- Huang, S.-M.; Nakayama, S.; Iino, S. & Tomita, T. (1999). Voltage sensitivity of Slow wave frequency in isolated circular muscle strips from guinea pig gastric antrum. *American Journal of Physiology Gastrointestinal and Liver Physiology* 276, G518-528.
- Iino, S.; Horiguchi, S.; Horiguchi, K. & Nojyo, Y. (2007). Interstitial cells of Cajal in the gastrointestinal musculature of W mutant mice. *Archives of Histology and Cytology* 70, 163-173.

- Kinoshita, K.; Horiguchi, K.; Fujisawa, M.; Kobirumaki, F.; Yamato, S.; Hori, M. & Ozaki, H. (2007). Possible involvement of muscularis resident macrophages in impairment of interstitial cells of Cajal and myenteric nerve systems in rat models of TNBS-induced colitis. *Histochemistry and Cell Biology* 127, 41-53.
- Kito, Y.; Ward, S.M. & Sanders, K.M. (2005). Pacemaker potentials generated by interstitial cells of Cajal in the murine intestine. *American Journal of Physiology Cell Physiology* 288, C710-720.
- Lammers, W.J.; Ver Donck, L.; Schuurkes, J.A. & Stephen, B. (2005). Peripheral pacemakers and patterns of slow wave propagation in the canine small intestine in vivo. *Canadian Journal of Physiology and Pharmacology* 83, 1031-1043.
- Liu, H.-N.; Ohya, S.; Furuzono, S.; Wang, J.; Imaizumi, Y. & Nakayama, S. (2005a). Co-contribution of IP₃R and Ca²⁺ influx pathways to pacemaker Ca²⁺ activity in stomach ICC. *Journal of Biological Rhythms* 20, 15-26.
- Liu, H.-N.; Ohya, S.; Wang, J.; Imaizumi, Y. & Nakayama, S. (2005b). Involvement of ryanodine receptors in pacemaker Ca²⁺ oscillation in murine gastric ICC. *Biochimica et Biophysica Research Communications* 328, 640-646.
- Lyford, G.L.; He, C.L.; Soffer, E.; Hull, T.L.; Strong, S.A.; Senagore, A.J.; Burgart, L.J.; Young-Fadok, T.; Szurszewski, J.H. & Farrugia, G. (2002). Pan-colonic decrease in interstitial cells of Cajal in patients with slow transit constipation. *Gut* 51, 496-501.
- Maeda, H.; Yamagata, A.; Nishikawa, S.; Yoshinaga, K.; Kobayashi, S.; Nishi, K. & Nishikawa, S.-I. (1992). Requirement of c-kit for development of intestinal pacemaker system. *Development* 116, 369-375.
- McCloskey, K.D.; Hollywood, M.A.; Thornbury, K.D.; Ward, S.M. & McHale, N.G. (2002). Kit-like immunopositive cells in sheep mesenteric lymphatic vessels. *Cell and Tissue Research* 310, 77-84.
- Nakamura, W.; Honma, S.; Shirakawa, T. & Honma K. (2002). Clock mutation lengthens the circadian period without damping rhythms in individual SCN neurons. *Nature Neuroscience* 5, 399-400.
- Nakayama, S.; Ohishi, R.; Sawamura, K.; Watanabe, K. & Hirose K. (2009). Microelectrode array evaluation of gut pacemaker activity in wild-type and *W/W^v* mice. *Biosensors and Bioelectronics* 25, 61-67.
- Nakayama, S.; Shimono, K.; Liu, H.-N.; Jiko, H.; Katayama, N.; Tomita, T. & Goto K. (2006). Pacemaker phase shift in the absence of neural activity in guinea-pig stomach: a microelectrode array study. *Journal of Physiology (Lond.)* 576, 727-738.
- Nakayama, S.; Kajioka, S.; Goto, K.; Takaki, M. & Liu, H.N. (2007). Calcium-associated mechanisms in gut pacemaker activity. *Journal of Cellular and Molecular Medicine* 11, 958-968.
- Ordög, T.; Takayama, I.; Cheung, W.K.; Ward, S.M. & Sanders, K.M. (2000). Remodeling of networks of interstitial cells of Cajal in a murine model of diabetic gastroparesis. *Diabetes* 49, 1731-1739.
- Reith, A.D.; Rottapel, R.; Giddens, E.; Brady, C.; Forrester, L. & Bernstein, A. (1990). *W* mutant mice with mild or severe developmental defects contain distinct point mutations in the kinase domain of the c-kit receptor. *Genes & Development* 4, 390-400.
- Rumessen, J.J. & Vandervinden, J.-M. (2003). Interstitial cells in the musculature of the gastrointestinal tract: Cajal and beyond. *International Review of Cytology* 229, 115-208.
- Sanders, K.M.; Ordög, T.; Koh, S.D.; Torihashi, S. & Ward, S.M. (1999). Development and plasticity of interstitial cells of Cajal. *Neurogastroenterology and Motility* 11, 311-338.

- Sun, X.; Yu, B.; Xu, L.; Dong, W. & Luo, H. (2006). Interstitial cells of Cajal in the murine gallbladder. *Scandinavian Journal of Gastroenterology* 2006; 41: 1218-26.
- Suzuki, T.; Won, K.J.; Horiguchi, K.; Kinoshita, K.; Hori, M.; Torihashi, S.; Momotani, E.; Itoh, K.; Hirayama, K.; Ward, S.M.; Sanders, K.M. & Ozaki, H. (2004). Muscularis inflammation and the loss of interstitial cells of Cajal in the endothelin ETB receptor null rat. *American Journal of Physiology Gastrointestinal and Liver Physiology* 287, G638-646.
- Takaki, M. (2003). Gut pacemaker cells: The interstitial cells of Cajal. *Journal of Smooth Muscle Research* 39, 137-161.
- Takaki, M.; Suzuki, H. & Nakayama, S. (2010). Recent advances in studies of spontaneous activity in smooth muscle: ubiquitous pacemaker cells. *Progress in Biophysics and Molecular Biology* 102, 129-135.
- Torihashi, S.; Fujimoto, T.; Trost, C. & Nakayama, S. (2002). Calcium oscillation linked to pacemaking of interstitial cells of Cajal. *Journal of Biological Chemistry* 277, 19191-19197.
- Yamazawa, T. & Iino, M. (2002). Simultaneous imaging of Ca²⁺ signals in interstitial cells of Cajal and longitudinal smooth muscle cells during rhythmic activity in mouse ileum. *Journal of Physiology (Lond.)* 538, 823-835.
- Vanderwinden, J.M.; Rumessen, J.J.; Liu, H.; Descamps, D.; De Laet, M.H. & Vanderhaeghen, J.J. (1996). Interstitial cells of Cajal in human colon and in Hirschsprung's disease. *Gastroenterology* 111, 901-910.
- Vittal, H.; Farrugia, G.; Gomez, G. & Pasricha, P.J. (2007). Mechanisms of disease: the pathological basis of gastroparesis--a review of experimental and clinical studies. *Nature Clinical Practice Gastroenterology and Hepatology* 4, 336-346.
- Wang, X.Y.; Berezin, I.; Mikkelsen, H.B.; Der, T.; Bercik, P.; Collins, S.M. & Huizinga, J.D. (2002). Pathology of interstitial cells of Cajal in relation to inflammation revealed by ultrastructure but not immunohistochemistry. *American Journal of Pathology* 160, 1529-1540.
- Wang, X.Y., Lammers, W.J., Bercik, P., Huizinga, J.D. (2005). Lack of pyloric interstitial cells of Cajal explains distinct peristaltic motor patterns in stomach and small intestine. *American Journal of Physiology Gastrointestinal and Liver Physiology* 289, G539-549.
- Wang, X.Y.; Zarate, N.; Soderholm, J.D.; Bourgeois, J.M.; Liu, L.W. & Huizinga, J.D. (2007). Ultrastructural injury to interstitial cells of Cajal and communication with mast cells in Crohn's disease. *Neurogastroenterology and Motility* 19, 349-364.
- Ward, S.M.; Burns, A.J.; Torihashi, S. & Sanders, K.M. (1994). Mutation of the proto-oncogene c-kit blocks development of interstitial cells and electrical rhythmicity in murine intestine. *Journal of Physiology (Lond.)* 480, 91-97.
- Wedel, T.; Spiegler, J.; Soellner, S.; Roblick, U.J.; Schiedeck, T.H.; Bruch, H.P. & Krammer, H.J. (2002). Enteric nerves and interstitial cells of Cajal are altered in patients with slow-transit constipation and megacolon. *Gastroenterology* 123, 1459-1467.
- Wood, J.D. 2006. Integrative function of enteric nervous system. in: Barrett, K.E., Ghishan, F.K., Merchant, J.L., Said, H.M., Wood, J.D., Johnson, L.R. (eds.) *Physiology of the Gastrointestinal Tract*. Volume 2. fourth ed. Academic Press, New York, pp.665-684.



Modern Pacemakers - Present and Future

Edited by Prof. Mithilesh R Das

ISBN 978-953-307-214-2

Hard cover, 610 pages

Publisher InTech

Published online 14, February, 2011

Published in print edition February, 2011

The book focuses upon clinical as well as engineering aspects of modern cardiac pacemakers. Modern pacemaker functions, implant techniques, various complications related to implant and complications during follow-up are covered. The issue of interaction between magnetic resonance imaging and pacemakers are well discussed. Chapters are also included discussing the role of pacemakers in congenital and acquired conduction disease. Apart from pacing for bradycardia, the role of pacemakers in cardiac resynchronization therapy has been an important aspect of management of advanced heart failure. The book provides an excellent overview of implantation techniques as well as benefits and limitations of cardiac resynchronization therapy. Pacemaker follow-up with remote monitoring is getting more and more acceptance in clinical practice; therefore, chapters related to various aspects of remote monitoring are also incorporated in the book. The current aspect of cardiac pacemaker physiology and role of cardiac ion channels, as well as the present and future of biopacemakers are included to glimpse into the future management of conduction system diseases. We have also included chapters regarding gut pacemakers as well as pacemaker mechanisms of neural networks. Therefore, the book covers the entire spectrum of modern pacemaker therapy including implant techniques, device related complications, interactions, limitations, and benefits (including the role of pacing role in heart failure), as well as future prospects of cardiac pacing.

How to reference

In order to correctly reference this scholarly work, feel free to copy and paste the following:

Shinsuke Nakayama, Mizuki Taniguchi and Hong-Nian Liu (2011). Network of Gut Pacemaker Cells: Spatio-Temporal Evaluation of Electrical Activity by Use of Microelectrode Array, Modern Pacemakers - Present and Future, Prof. Mithilesh R Das (Ed.), ISBN: 978-953-307-214-2, InTech, Available from:

<http://www.intechopen.com/books/modern-pacemakers-present-and-future/network-of-gut-pacemaker-cells-spatio-temporal-evaluation-of-electrical-activity-by-use-of-microelec>

INTECH
open science | open minds

InTech Europe

University Campus STeP Ri
Slavka Krautzeka 83/A
51000 Rijeka, Croatia
Phone: +385 (51) 770 447

InTech China

Unit 405, Office Block, Hotel Equatorial Shanghai
No.65, Yan An Road (West), Shanghai, 200040, China
中国上海市延安西路65号上海国际贵都大饭店办公楼405单元
Phone: +86-21-62489820

www.intechopen.com

Fax: +385 (51) 686 166
www.intechopen.com

Fax: +86-21-62489821

IntechOpen

IntechOpen

© 2011 The Author(s). Licensee IntechOpen. This chapter is distributed under the terms of the [Creative Commons Attribution-NonCommercial-ShareAlike-3.0 License](#), which permits use, distribution and reproduction for non-commercial purposes, provided the original is properly cited and derivative works building on this content are distributed under the same license.

IntechOpen

IntechOpen